



地址 /Add: No. 63, Beihuan Road, Haifeng Street, Wudi
county. Binzhou city, Shandong Province
电话 /Tel: +86 13589734000 +86 13589703929
<https://cnxinyoumetal.en.alibaba.com/>
邮箱 /E-mail: 2646932864@qq.com



无棣棣阳不锈钢制品有限公司

Wudi Diyang Stainless Steel Products Co.,LTD

◎公司简介 Company Introduction

无棣棣阳不锈钢制品有限公司成立于2015年。公司位于山东省无棣县，靠近青岛港、天津港和北京，交通便利，是一家专业从事不锈钢产品设计、生产、加工、销售的综合性企业。

我公司采用硅溶胶壳、精密铸造、表面处理工艺，专业生产不锈钢、碳钢、精密铸造件；游艇配件、船舶五金、不锈钢索具、快速接头、汽车配件等，产品广泛应用于海运、石油化工、制药、食品、电气船舶等领域。

产品出口到美国、英国、德国、法国、加拿大、澳大利亚、荷兰、台湾省、日本、韩国等欧洲和东南亚，在国内也有良好的销售市场，一直是国内外客户的信任和赞扬。

棣阳不锈钢自成立以来，始终秉承“质量第一。诚信管理”的企业理念，以“共赢”为宗旨，致力于科技创新，打造企业品牌。满足客户需求。我们真诚邀请来自世界各地的朋友参观公司并进行洽谈！

Wudi Diyang Stainless Steel Products Co., Ltd. was established in 2015. The company is located in Wudi County, Shandong Province, close to Qingdao Port, Tianjin Port and Beijing, with convenient transportation. It is one of the comprehensive enterprises specializing in the design, production, processing and sales of stainless steel products.

Our company uses silica sol shell, precision casting, and surface treatment processes to specialize in the production of stainless steel, carbon steel, and precision castings; yacht accessories, ship hardware, stainless steel rigging, quick connectors, auto parts, etc., and its products are widely used in shipping and petrochemical industries, pharmaceuticals, food, electrical ships and other fields.

The products are exported to the United States, the United Kingdom, Germany, France, Canada, Australia, the Netherlands, Taiwan Province, Japan, South Korea and other Europe and Southeast Asia. They also have a good sales market in China and have always been trusted and praised by customers at home and abroad.

Since its establishment, Diyang Stainless Steel has always adhered to the corporate philosophy of "quality first, honest management" and with the purpose of "win-win", it is committed to technological innovation, building corporate brands, and meeting customer needs. We sincerely invite friends from all over the world to visit the company and negotiate!

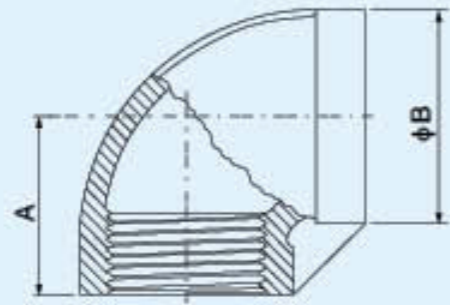
Contents

○ Investment Casting Stainless Steel Screwed Fittings	01
○ Investment Casting Stainless Steel Screwed Fittings(SP-114)	16
○ Investment Casting Stainless Steel Quick Coupling	23
○ 1PC Screwed Ball Valve(800PSI/1000PSI)	26
○ 2PC Screwed Ball Valve(1000PSI)	27
○ 2PC Flanged Ball Valve	28
○ 3PC Screwed Ball Valve	29
○ 3PC Ball Valve Butt-Welded(1000PSI)	30
○ 3PC Ball Valve Socket Welded(1000PSI)	31
○ 3PC High Mounting Pad Pneumatic Screwed Ball Valve	32
○ 3PC Flanged Ball Valve	33
○ Three-Way Ball Valve	34
○ Globe Valve	35
○ Gate Valve	36
○ Check Valve(200PSI)/Y-Strainer(800PSI)	37
○ Single DISC Wafer Check Valve	38
○ Sanitary Grade Welded Butterfly Valve	40
○ Mini Ball Valve/Angle Valve	41
○ Sanitary Grade Food Union(DIN11851)	42
○ Stainless Steel Flange	43
○ Stainless Steel Hardware	44

Production Technology



Elbow 90°



LF01

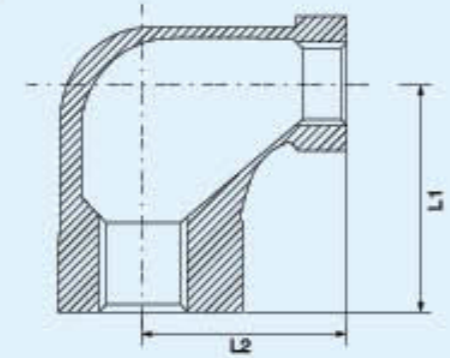
Class 150

**NPT
ISO 7/1 Rp**

Tolerance: ± 1 Unit: mm

SIZE	1/8"	1/4"	3/8"	1/2"	3/4"	1"	1-1/4"	1-1/2"	2"	2-1/2"	3"	4"
A	19.0	19.7	23.0	28.0	32.8	35.5	44.7	48.0	57.0	68.6	75.5	86.5
B	15.0	19.8	23.0	26.0	32.0	40.0	49.0	55.0	68.7	87.0	95.0	123.0

Red Elbow 90°



LF02

Class 150

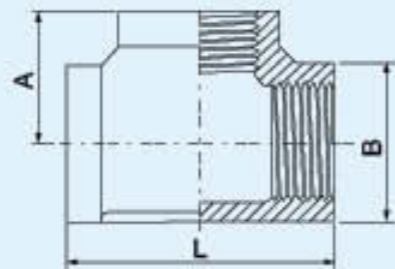
**NPT
ISO 7/1 R**

Tolerance: ± 1 Unit: mm

SIZE	1/4" x 1/8"	3/8" x 1/8"	3/8" x 1/4"	1/2" x 1/4"	1/2" x 3/8"	3/4" x 3/8"	3/4" x 1/2"	1" x 1/2"
L1	22	19	24	21	26	26.5	26.5	32.5
L2	20	21	24	22	25	28	28	34

SIZE	1" x 3/4"	1-1/4" x 3/4"	1-1/4" x 1"	1-1/2" x 1"	1-1/2" x 1-1/4"	2" x 1-1/4"	2" x 1-1/2"
L1	34	38	40	42	43	45	52
L2	35	40	40	45	47	52	55

TEE



LF03

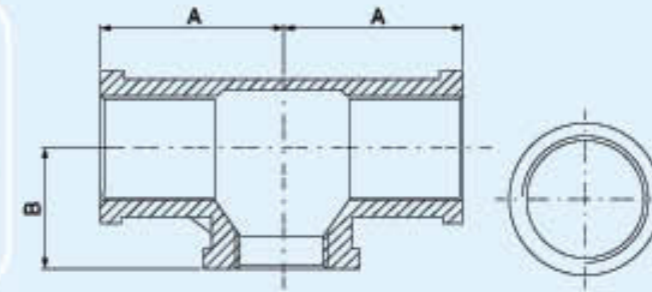
Class 150

**NPT
ISO 7/1 Rp**

Tolerance: ± 1 Unit: mm

SIZE	1/8"	1/4"	3/8"	1/2"	3/4"	1"	1-1/4"	1-1/2"	2"	2-1/2"	3"	4"
A	17.8	19.7	22.6	26.0	30.0	36.0	41.8	48.5	58.6	69.5	74.2	94.9
B	14.6	19.9	23.6	26.0	31.7	40.0	49.5	55.7	68.3	87.0	98.9	123.6
L	36.0	39.8	46.0	53.0	59.7	73.0	83.7	96.0	110.0	139.0	147.0	183.0

Red Tee



LF04

Class 150

**NPT
ISO 7/1 R**

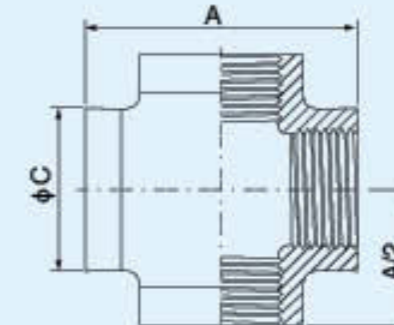
Tolerance: ± 1 Unit: mm

SIZE	1/4" x 1/8"	3/8" x 1/8"	3/8" x 1/4"	1/2" x 1/8"	1/2" x 1/4"	1/2" x 3/8"	3/4" x 1/4"	3/4" x 3/8"
A	22	19	21.5	21	21.5	21.5	25	25
B	20	21	21	21.5	22	25.3	27	27.3

SIZE	3/4" x 1/2"	1" x 1/4"	1" x 3/8"	1" x 1/2"	1" x 3/4"	1-1/4" x 3/8"	1-1/4" x 1/2"	1-1/4" x 3/4"
A	26	25	26	31	31	30	32	32
B	27.6	29	30	31.5	32	37.5	38	38.6

SIZE	1-1/4" x 1"	1-1/2" x 1/2"	1-1/2" x 3/4"	1-1/2" x 1"	1-1/2" x 1-1/4"	2" x 3/4"	2" x 1"	2" x 1-1/4"	2" x 1-1/2"
A	36	31	34	37	41	35	38	42	45
B	43	40	40	44	44	47.5	51	51	51

Cross



LF05

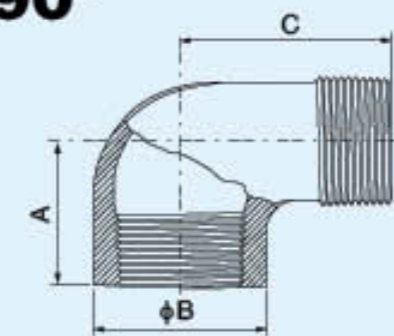
Class 150

**NPT
ISO 7/1 Rp**

Tolerance: ± 1 Unit: mm

SIZE	1/8"	1/4"	3/8"	1/2"	3/4"	1"	1-1/4"	1-1/2"	2"	2-1/2"	3"	4"
A	38.0	40.0	46.0	53.0	63.9	75.0	90.9	91.5	107.0	134.5	146	175
C	15.0	18.0	20.5	27.8	33.5	41.0	49.0	55.3	69.0	83.5	97	124

Street Elbow 90°



LF06

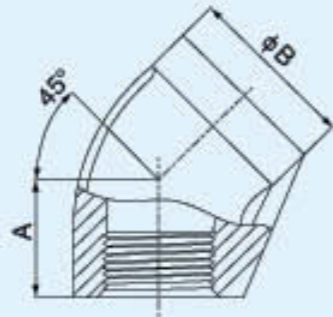
Class 150

**NPT
ISO 7/1 Rp R**

Tolerance: ± 1 Unit: mm

SIZE	1/8"	1/4"	3/8"	1/2"	3/4"	1"	1-1/4"	1-1/2"	2"	2-1/2"	3"	4"
A	16.9	19.0	23.5	28.0	31.0	38.5	55.0	47.8	56.0	67.0	75.0	82.0
B	14.5	17.5	20.8	26.0	31.6	40.0	50.5	55.8	67.8	84.0	94.5	124.8
C	23.8	29.8	33.0	38.0	46.0	53.0	57.5	38.0	70.0	87.9	99.7	116.6

Elbow 45°



LF07

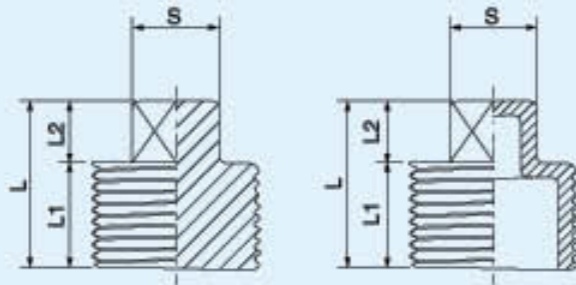
Class 150

**NPT
ISO 7/1 Rp**

Tolerance: ± 1 Unit: mm

SIZE	1/8"	1/4"	3/8"	1/2"	3/4"	1"	1-1/4"	1-1/2"	2"	2-1/2"	3"	4"
A	19.0	21.0	23.0	25.0	30.0	32.0	33.0	36.0	44.0	50.0	54.0	58.5
B	15.9	19.8	23.0	27.0	32.0	42.0	49.0	57.0	69.0	85.0	98.5	124.0

Square Plug



LF08

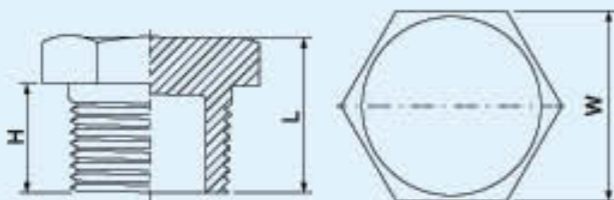
Class 150

**NPT
ISO 7/1 Rp R**

Tolerance: ± 1 Unit: mm

SIZE	1/8"	1/4"	3/8"	1/2"	3/4"	1"	1-1/4"	1-1/2"	2"	2-1/2"	3"	4"
L1	10.0	12.0	14.0	15.0	18.0	21.0	24.0	25.0	29.0	31.0	34.0	40.0
L2	6.0	6.0	6.0	7.0	9.0	11.0	12.0	12.0	14.0	15.0	16.0	22.0
L	16.0	18.0	20.0	22.0	27.0	32.0	36.0	37.0	43.0	46.0	50.0	62.0
S	7.0	9.0	10.0	11.0	16.0	19.0	22.0	22.0	27.0	32.0	36.0	58.0

Hexagon Plug



LF09

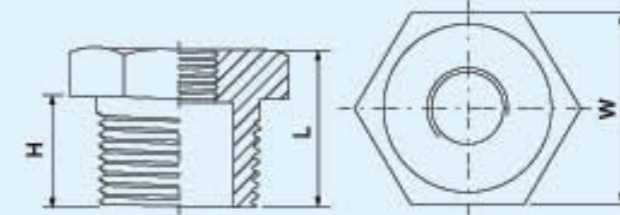
Class 150

**NPT
ISO 7/1 R**

Tolerance: ± 1 Unit: mm

SIZE	1/8"	1/4"	3/8"	1/2"	3/4"	1"	1-1/4"	1-1/2"	2"	2-1/2"	3"	4"
H	8.0	11.0	11.0	15.0	16.0	18.0	21.5	21.5	25.5	30.5	34.0	36.0
L	14.0	17.0	17.0	21.0	24.0	27.0	32.0	33.0	38.0	45.0	48.0	54.0
W	12.7	16.0	19.0	24.5	30.0	36.0	46.0	50.0	65.0	80.8	91.0	119.0

Hexagon Bushing



LF10

Class 150

**NPT
ISO 7/1 Rp R**

Tolerance: ± 1 Unit: mm

SIZE	1/4" x 1/8"	3/8" x 1/8"	3/8" x 1/4"	1/2" x 1/8"	1/2" x 1/4"	1/2" x 3/8"	3/4" x 1/8"	3/4" x 1/4"	3/4" x 3/8"	3/4" x 1/2"
L	18.0	19.0	19.0	21.0	21.0	21.0	26.0	26.0	26.0	26.0
H	11.7	13.0	13.0	15.0	15.0	15.0	18.0	18.0	18.0	18.0
W	16.7	21.0	21.0	25.0	25.0	25.0	29.0	29.0	29.0	29.0

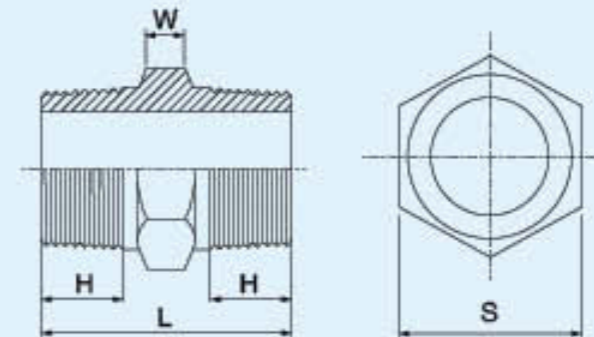
SIZE	1" x 1/4"	1" x 3/8"	1" x 1/2"	1" x 3/4"	1-1/4" x 1/2"	1-1/4" x 3/4"	1-1/4" x 1"	1-1/2" x 1/2"	1-1/2" x 3/4"
L	27.6	27.6	27.6	27.6	32.0	32.0	32.0	32.0	32.0
H	19.6	19.6	19.6	19.6	22.5	22.5	22.5	22.0	22.0
W	37.0	37.0	37.0	37.0	48.0	48.0	48.0	53.0	53.0

SIZE	1-1/2" x 1"	1-1/2" x 1-1/4"	2" x 3/4"	2" x 1"	2" x 1-1/4"	2" x 1-1/2"	2-1/2" x 1"	2-1/2" x 1-1/4"	2-1/2" x 1-1/2"
L	32.0	32.0	37.6	37.6	37.6	37.6	44.0	44.0	44.0
H	22.0	22.0	25.5	25.5	25.5	25.5	32.0	32.0	32.0
W	53.0	53.0	63.0	63.0	63.0	63.0	80.0	80.0	80.0

SIZE	2-1/2" x 2"	3" x 1/2"	3" x 3/4"	3" x 1"	3" x 1-1/4"	3" x 1-1/2"	3" x 2"	3" x 2-1/2"	4" x 1/2"
L	44.0	46.0	46.0	46.0	46.0	46.0	46.0	46.0	52.0
H	32.0	34.5	34.5	34.5	34.5	34.5	34.5	34.5	38.0
W	80.0	92.0	92.0	92.0	92.0	92.0	92.0	92.0	116.0

SIZE	4" x 3/4"	4" x 1"	4" x 1-1/4"	4" x 1-1/2"	4" x 2"	4" x 2-1/2"	4" x 3"
L	52.0	52.0	52.0	52.0	52.0	52.0	52.0
H	38.0	38.0	38.0	38.0	38.0	38.0	38.0
W	116.0	116.0	116.0	116.0	116.0	116.0	116.0

Hexagon Nipple



LF11

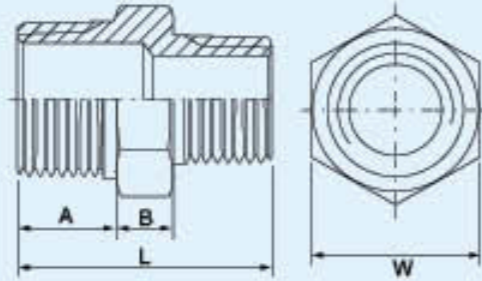
Class 150

**NPT
ISO 7/1 R**

Tolerance: ± 1 Unit: mm

SIZE	1/8"	1/4"	3/8"	1/2"	3/4"	1"	1-1/4"	1-1/2"	2"	2-1/2"	3"	4"
H	12.9	12.0	12.8	15.0	17.0	19.6	20.7	22.8	25.6	27.8	31.0	35.7
L	33.0	30.0	31.8	38.0	43.8	49.7	54.0	59.9	65.5	72.9	80.0	91.0
S	12.5	17.0	20.9	26.0	31.0	38.0	45.0	52.0	62.7	80.0	92.0	117.5
W	7.5	6.0	6.0	6.0	9.5	10.5	12.5	14.0	14.0	17.0	18.0	19.5

Reducing Nipple



LF12
Class 150
NPT
ISO 7/1 R

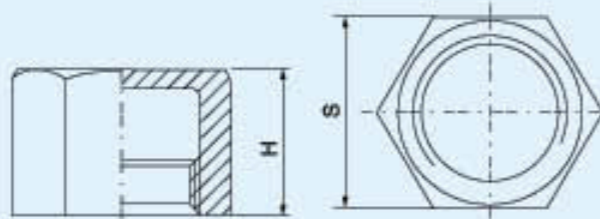
Tolerance: ± 1 Unit: mm

SIZE	1/4" x 1/8"	3/8" x 1/8"	3/8" x 1/4"	1/2" x 1/8"	1/2" x 1/4"	1/2" x 3/8"	3/4" x 1/8"	3/4" x 1/4"	3/4" x 3/8"	3/4" x 1/2"	1" x 1/8"	1" x 1/4"	1" x 3/8"	1" x 1/2"
A	12	13	13	16	16	16	33	18.2	18.2	18	19.8	19.7	20.2	20
B	8	6	6	6	6	6	9.1	9.2	9.3	12.3	9.3	9.2	9.3	12
L	31	30	31	33	34	35	38.1	39	39.5	46	40	40.7	41.9	48
W	16	20	20	23	23	23	31	31	31	29	38.4	38	38	36

SIZE	1" x 3/4"	1-1/4" x 1/2"	1-1/2" x 3/4"	1-1/4" x 1"	1-1/2" x 1/4"	1-1/2" x 1/2"	1-1/2" x 3/4"	1-1/2" x 1"	1-1/2" x 1-1/4"	2" x 1/4"	2" x 1/2"	2" x 3/4"	2" x 1"	2" x 1-1/4"
A	20	21	20.8	22	23	23.5	22.9	22.2	23	25.6	25.8	25.5	25.7	26.1
B	11.7	12.1	12.3	10	14.2	14	13.9	14	12.7	11.3	14.1	14.2	14.3	14
L	50	49	50.8	52	48.9	52.5	54.8	57	56.8	48.8	56.3	57.8	59.8	61
W	35.6	45	45	45	51.8	51.8	51.7	52	52.2	61.6	63	63.2	63.3	63

SIZE	2" x 1-1/2"	2-1/2" x 1"	2-1/2" x 1-1/4"	2-1/2" x 1-1/2"	2-1/2" x 2"	3" x 1"	3" x 1-1/4"	3" x 1-1/2"	3" x 2"	3" x 2-1/2"	4" x 1"	4" x 2"	4" x 3"
A	26	27.6	27.9	27.9	27.9	31.4	31.9	31.7	31.2	31.2	36.5	35.5	34.4
B	14	17	17.3	17	16.9	17.1	17.2	17	17.1	17.1	18.1	19	16.5
L	63	64.6	66	67.6	70.6	69.4	69.8	72	74.4	76.6	74.5	80.4	81.5
W	63	79.7	80	79.5	79.5	92.8	93.7	93	92.5	92.8	118	118	117.2

Hexagon Cap

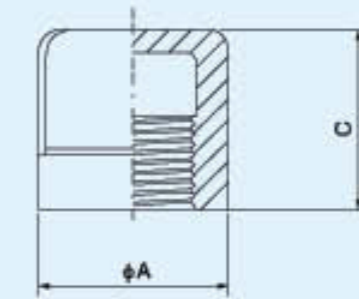


LF13
Class 150
NPT
ISO 7/1 Rp

Tolerance: ± 1 Unit: mm

SIZE	1/8"	1/4"	3/8"	1/2"	3/4"	1"	1-1/4"	1-1/2"	2"	2-1/2"	3"	4"
S	14.0	17.0	20.5	25.0	30.0	37.0	46.0	53.0	64.0	82.0	96.0	122.0
H	15.0	15.0	18.0	20.0	21.0	25.0	31.0	33.0	36.0	43.0	45.0	48.0

Round Cap

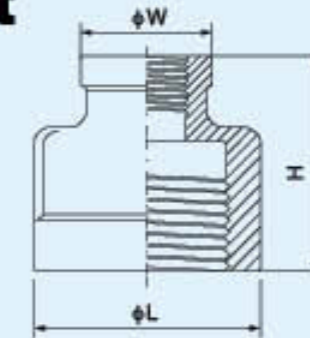


LF14
Class 150
NPT
ISO 7/1 Rp

Tolerance: ± 1 Unit: mm

SIZE	1/8"	1/4"	3/8"	1/2"	3/4"	1"	1-1/4"	1-1/2"	2"	2-1/2"	3"	4"
C	15.0	15.0	18.0	22.8	25.0	30.0	30.5	32.0	33.6	37.5	42.0	40.0
A	15.6	17.5	22.0	27.9	34.0	43.0	51.0	58.9	70.6	84.5	102.0	123.8

Reducing Socket



LF15
Class 150
NPT
ISO 7/1 Rp

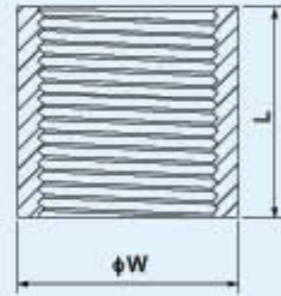
Tolerance: ± 1 Unit: mm

SIZE	1/4" x 1/8"	3/8" x 1/4"	1/2" x 1/8"	1/2" x 1/4"	1/2" x 3/8"	3/4" x 1/8"	3/4" x 1/4"	3/4" x 3/8"	3/4" x 1/2"	1" x 1/8"	1" x 1/4"	1" x 3/8"	1" x 1/2"	1" x 3/4"	1-1/4" x 1/4"
H	25.5	29	35.8	29.8	33.9	35.8	35.8	35.8	39	32.5	35.3	39.2	41	42.5	48.3
L	20	22.5	30.4	27	29.4	32.6	32.8	32.2	33	40.1	39	40.8	40.5	42.5	49.9
W	17	19	19.6	17.5	25.5	18.9	19.2	23	27	15.6	17.6	23.9	27	34.5	19.2

SIZE	1-1/4" x 3/8"	1-1/4" x 1/2"	1-1/4" x 3/4"	1-1/4" x 1"	1-1/2" x 1/4"	1-1/2" x 3/8"	1-1/2" x 1/2"	1-1/2" x 3/4"	1-1/2" x 1"	1-1/2" x 1-1/4"	2" x 1/4"	2" x 3/8"	2" x 1/2"	2" x 3/4"	2" x 1"
H	48.5	43.8	46.6	49.2	48	48.6	48.8	47.2	50.6	53.5	42	50	51.4	50	54
L	49.8	49.1	50	48.2	56.1	56.4	59.1	59.1	59	59	64	68	66	67.5	71.2
W	22.6	27	33	39.5	19.2	22.8	27.9	34.5	43	51	17.5	22.6	26.6	32	43

SIZE	2" x 1-1/4"	2" x 1-1/2"	2-1/2" x 1"	2-1/2" x 1-1/4"	2-1/2" x 1-1/2"	2-1/2" x 2"	3" x 1"	3" x 1-1/4"	3" x 1-1/2"	3" x 2"	3" x 2-1/2"	4" x 1-1/2"	4" x 2"	4" x 2-1/2"	4" x 3"
H	56.5	56.5	61.1	56.6	56.5	56	62.4	69.9	69.8	71	60.2	65.7	56.5	65.4	61.5
L	70	70	82.7	81.7	81.7	82.8	99	95.4	95.1	101	95	123.6	123	124.5	123.5
W	50.5	58.8	40.2	54.6	54.6	64	40.4	56.1	62.8	72	80.8	56.4	67.8	82.3	98

Socket O.D. Machined



LF16

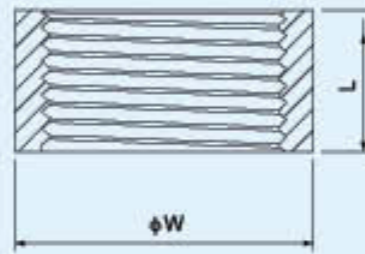
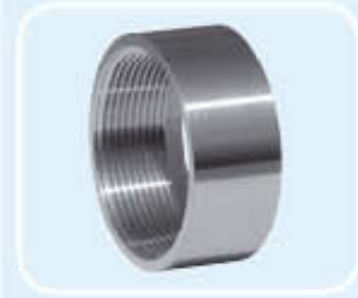
Class 150

**NPT
ISO 7/1 Rp**

Tolerance: ± 1 Unit: mm

SIZE	1/8"	1/4"	3/8"	1/2"	3/4"	1"	1-1/4"	1-1/2"	2"	2-1/2"	3"	4"
L	20.0	25.0	25.0	33.0	35.0	42.0	47.0	47.0	56.0	65.0	70.0	80.0
W	14.0	18.5	21.5	26.0	32.0	39.0	48.0	54.0	66.5	82.0	95.0	122.0

Half Coupling



LF17

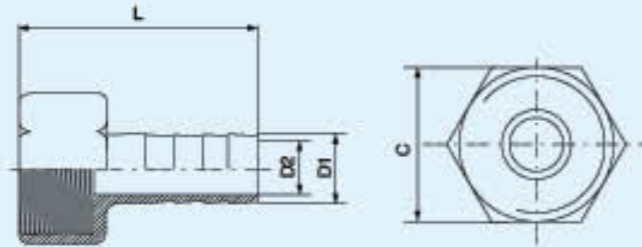
Class 150

**NPT
ISO 7/1 R**

Tolerance: ± 1 Unit: mm

SIZE	1/8"	1/4"	3/8"	1/2"	3/4"	1"	1-1/4"	1-1/2"	2"	2-1/2"	3"	4"
L	11.0	11.0	14.0	16.0	18.0	20.0	23.0	23.0	27.0	32.0	35.0	38.0
W	14.0	18.5	21.5	26.0	32.0	39.0	48.0	54.0	66.5	82.0	95.0	122.0

Hexagon Hose Nipple



LF18

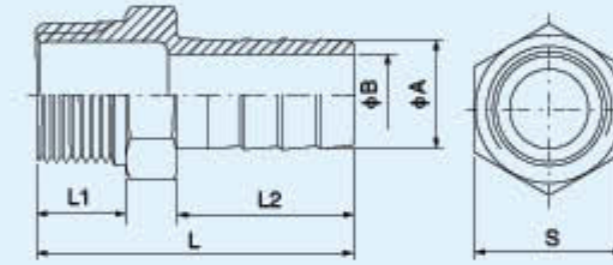
Class 150

**NPT
ISO 7/1 R**

Tolerance: ± 1 Unit: mm

SIZE	1/8"	1/4"	1/4"	1/4"	3/8"	3/8"	3/8"	1/2"	1/2"	1/2"	3/4"	3/4"	3/4"	1"	1-1/4"	1-1/2"	2"
D1	6.5	6.5	9	11	9	10.5	13	11	14	17	16	20.5	25	27.5	34	40.3	52
D2	3.7	3.7	5.5	7	5	6.5	8	6	8	11	11	14.5	19	21	27.5	33	45
L	32	34	34	34	39	39	39	45	45	45	48	48	48	53	59	65	72
C	14	17	17	17	20.5	20.5	20.5	24.5	24.5	24.5	30	30	30	36	46	55	64

Hose Nipple



LF19

Class 150

**NPT
ISO 7/1 R**

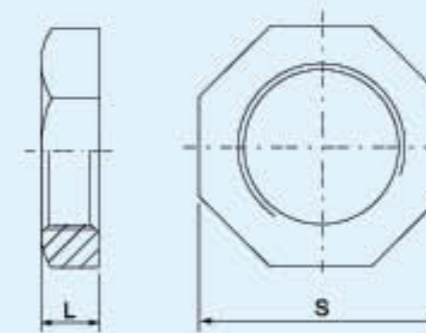
Tolerance: ± 1 Unit: mm

SIZE	1/8"	1/8"	1/8"	1/8"	1/8"	1/8"	1/8"	1/4"	1/4"	1/4"	1/4"	1/4"	1/4"	1/4"	1/4"	1/4"	1/4"	3/8"	3/8"	3/8"	3/8"	3/8"	3/8"	3/8"	3/8"
A	6	7	8	9	10.5	12	12.7	6	7	8	9	10.5	11	12	12.7	13	14	6	7	8	9	10.5	11	12	12.7
B	3	3.7	4	4	5	7	8	3	3.7	4	5	5	5.5	7	7	7	9	3.7	3.7	4	4	5	6	7	7
L2	20	20	20	20	20	20	20	24	24	24	24	24	24	24	24	24	24	25	25	25	25	25	25	25	25
L	34	34	34	34	34	34	34	42	42	42	42	42	42	42	42	42	42	45	45	45	45	45	45	45	45
S	14	14	14	14	14	14	14	16	16	16	16	16	16	16	16	16	16	19	19	19	19	19	19	19	19

SIZE	3/8"	3/8"	3/8"	1/2"	1/2"	1/2"	1/2"	1/2"	1/2"	1/2"	1/2"	1/2"	1/2"	1/2"	1/2"	1/2"	1/2"	3/4"	3/4"	3/4"	3/4"	3/4"	3/4"	3/4"	3/4"	1"
A	13	14	16	8	9	10.5	11	12	12.7	13	14	15	16	17	19	20	21	16	19	20	20.5	21	23	27	21	
B	7	9	10	4	4	5	7	7	7	7	9	9	10	12	13	14	15	10	13	14	14.5	15	17	21	15	
L2	25	25	25	26	26	26	26	26	26	26	26	26	26	26	26	26	26	35	35	35	35	35	35	35	45	
L	45	45	45	50	50	50	50	50	50	50	50	50	50	50	50	50	50	60	60	60	60	60	60	60	70	
S	19	19	19	22	22	22	22	22	22	22	22	22	22	22	22	22	22	27.5	27.5	27.5	27.5	27.5	27.5	27.5	36.5	

SIZE	1"	1"	1"	1"	1"	1-1/4"	1-1/4"	1-1/4"	1-1/4"	1-1/2"	1-1/2"	1-1/2"	1-1/2"	1-1/2"	1-1/2"	1-1/2"	1-1/2"	2"	2"	2"	2-1/2"	2-1/2"	2-1/2"	3"	3"	3"	4"
A	25	27	27.5	30	34	27	33	34	39	33	39	39.6	40.3	46	51	52	57	63	64	65	76	77	78	78	103		
B	19	21	21.5	23	27	20	26	27	30	26	30	30	30	36.7	44	45	50	51	54	55	66	67	68	68	91		
L2	45	45	45	45	45	45	45	45	46	46	46	46	46	46	55	55	55	67	67	67	92	92	92	92	96		
L	70	70	70	70	70	75	75	75	75	80	80	80	80	80	90	90	90	110	110	110	135	135	135	135	150		
S	36.5	36.5	36.5	36.5	36.5	46	46	46	46	52	52	52	52	52	63	63	63	79	79	79	93	93	93	93	118		

Lock Nut



LF20

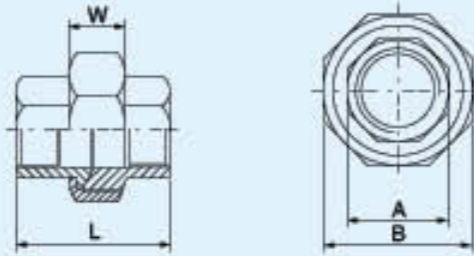
Class 150

**NPT
ISO 7/1 Rp**

Tolerance: ± 1 Unit: mm

SIZE	1/8"	1/4"	3/8"	1/2"	3/4"	1"	1-1/4"	1-1/2"	2"	2-1/2"	3"	4"
L	7.0	7.0	7.8	8.0	11.0	12.0	12.9	14.6	15.0	17.0	20.7	24
S	19.0	19.0	24.0	30.0	37.7	42.8	52.0	60.0	72.0	88.0	98.3	125

Union F/F



LF21

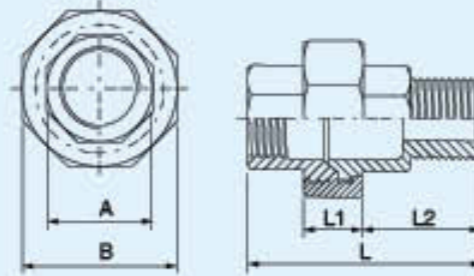
Class 150

**NPT
ISO 7/1 Rp**

Tolerance: ± 1 Unit: mm

SIZE	1/8"	1/4"	3/8"	1/2"	3/4"	1"	1-1/4"	1-1/2"	2"	2-1/2"	3"	4"
A	18.0	18.0	22.0	26.0	32.0	40.0	49.0	56.0	68.0	85.0	98.0	125.0
B	29.0	29.0	34.0	39.0	47.0	58.0	67.0	76.0	90.0	108.0	123.0	152.0
W	13.5	13.5	14.5	15.5	16.5	18.5	21.0	23.0	25.0	27.0	29.0	32.0
L	33.0	33.0	34.0	40.0	42.0	49.0	55.0	58.0	63.0	71.0	79.0	92.0

Union M/F



LF22

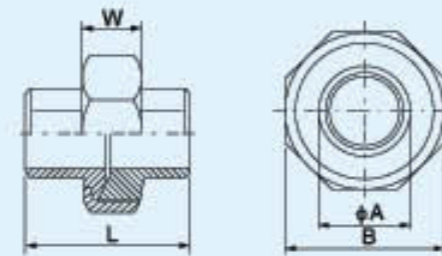
Class 150

**NPT
ISO 7/1 Rp R**

Tolerance: ± 1 Unit: mm

SIZE	1/8"	1/4"	3/8"	1/2"	3/4"	1"	1-1/4"	1-1/2"	2"	2-1/2"	3"	4"
A	18.0	18.0	22.0	26.0	32.0	40.0	49.0	56.0	68.0	85.0	98.0	125.0
B	29.0	29.0	34.0	39.0	47.0	58.0	67.0	76.0	90.0	108.5	123.0	152.0
L	42.5	42.5	45.5	53.5	56.5	66.5	74.0	78.0	83.0	92.0	102.0	114
L1	13.5	13.5	14.5	15.5	16.5	18.5	21.0	23.0	25.0	27.0	29.0	32.0
L2	19.0	19.0	21.0	26.0	27.0	33.0	36.0	37.0	39.0	43.0	48.0	63.0

Welding Union BW



LF23

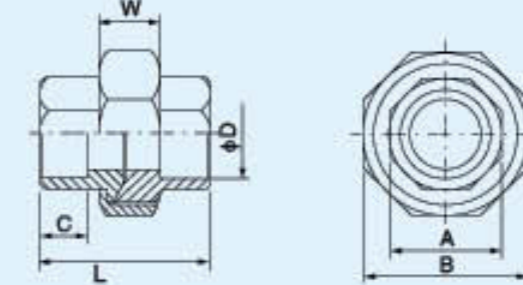
Class 150

**ANSI B16.25
DIN 3239/1**

Tolerance: ± 1 Unit: mm

SIZE	1/8"	1/4"	3/8"	1/2"	3/4"	1"	1-1/4"	1-1/2"	2"	2-1/2"	3"	4"
A	10.7	13.5	17.0	21.0	26.9	33.7	42.0	48.0	60.0	76.0	88.9	114.3
B	29.0	29.0	34.0	39.0	47.0	58.0	67.0	76.0	90.0	108.5	123.0	152.0
W	13.5	13.5	14.5	15.5	16.5	18.5	21.0	23.0	25.0	27.0	29.0	32.0
L	33.0	33.0	34.0	40.0	42.0	49.0	55.0	58.0	63.0	71.0	77.0	92.0

Welding Union SW



LF24

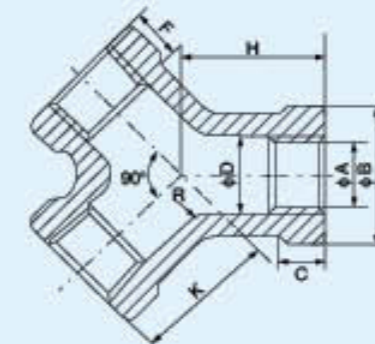
Class 150

DIN 3239/2

Tolerance: ± 1 Unit: mm

SIZE	1/8"	1/4"	3/8"	1/2"	3/4"	1"	1-1/4"	1-1/2"	2"	2-1/2"	3"	4"
A	18.0	18.0	22.0	26.0	32.0	40.0	49.0	56.0	68.0	85.0	98.0	125
B	29.0	29.0	34.0	39.0	47.0	58.0	67.0	76.0	90.0	108.5	123.0	152
C	8.2	8.2	8.2	9.5	10.0	13.0	13.0	13.0	13.0	18.0	19.0	21.0
D	10.7	14.5	17.6	22.0	27.0	34.0	43.0	49.0	60.8	74.0	89.5	115.6
L	33	33	34	40.0	42.0	49.0	55.0	58.0	63.0	71.0	79.0	92

Y-TEE



LF25

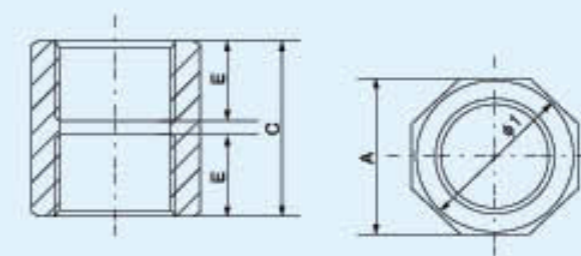
Class 150

**NPT
ISO 7/1 Rp**

Tolerance: ± 1 Unit: mm

SIZE	1/4"	3/8"	1/2"	3/4"	1"	1-1/4"	1-1/2"	2"	2-1/2"	3"	4"
K	19	23	27	32	36	46	48	57	69	78	97
H	20	25	30	35	41	50	52	62	75	85	105
B	18.3	21.8	28	34	43	51	59	71	90	105	131

Hexagon Socket F/F



LF26

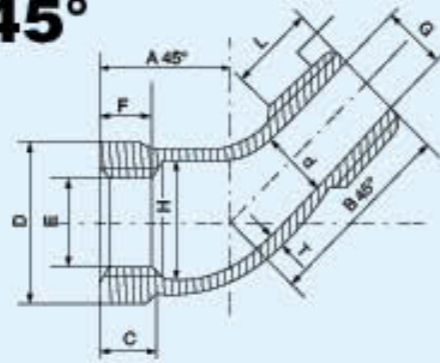
Class 150

**NPT
ISO 7/1 Rp R**

Tolerance: ± 1 Unit: mm

SIZE	1/4"	3/8"	1/2"	3/4"	1"	1-1/4"	1-1/2"	2"	2-1/2"	3"	4"
C	25	27	34	38	44.5	49	54	66	69.5	75	85
A	19	23	29	35	46	54	63	74	91	102	128

Street Elbow 45°

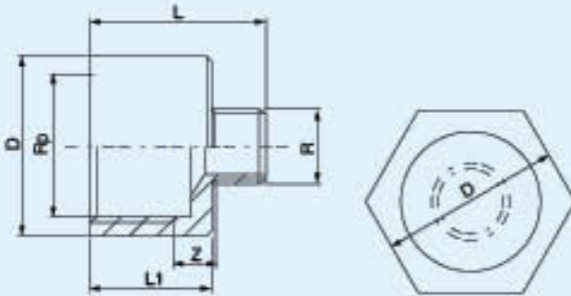


LF27
Class 150
NPT
ISO 7/1 Rp R

Tolerance: ± 1 Unit: mm

SIZE	1/8"	1/4"	3/8"	1/2"	3/4"	1"	1-1/4"	1-1/2"	2"	2-1/2"	3"	4"
A45°	16	17	19	21	25	29	34	37	42	49	52	65
B45°	21	23	27	31	36	42	49	51	59	71	72	96
D	15.5	18	22	28	34	43	51	59	72	90	100	131

Red Socket M/F



LF28
Class 150
NPT
ISO 7/1 R

Tolerance: ± 1 Unit: mm

SIZE	1/8" x 1/8"	1/4" x 1/8"	1/4" x 1/4"	3/8" x 1/8"	3/8" x 1/4"	3/8" x 3/8"	1/2" x 1/8"	1/2" x 1/4"	1/2" x 3/8"	1/2" x 1/2"
L	26.8	27	30	29	31	32	33	34	35	39
L1	15	16.5	16.4	18.5	18.5	18.3	22	22	22	22
D	14	17	17	21	21	21	26	26	26	26

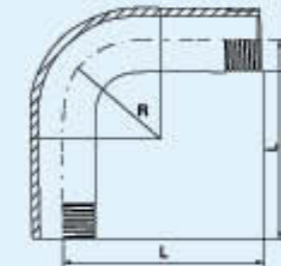
SIZE	3/4" x 1/8"	3/4" x 1/4"	3/4" x 3/8"	3/4" x 1/2"	3/4" x 3/4"	1" x 1/8"	1" x 1/4"	1" x 3/8"	1" x 1/2"	1" x 3/4"
L	33.5	35	33.5	38.5	42	36.5	38	38.5	41.5	44
L1	23	23	23	23	23	26	26	26	26	26
D	32	32	32	32	32	38	38	38	38	38

SIZE	1" x 1"	1-1/4" x 1/4"	1-1/4" x 3/8"	1-1/4" x 1/2"	1-1/4" x 3/4"	1-1/4" x 1"	1-1/4" x 1-1/4"	1-1/2" x 1/4"	1-1/2" x 3/8"
L	47	39	40	42.5	45	47	50	40	41
L1	26	27	27	27	27	27	27	28	28
D	38	46	46	46	46	46	46	54	54

SIZE	1-1/2" x 1/2"	1-1/2" x 3/4"	1-1/2" x 1"	1-1/2" x 1-1/4"	1-1/2" x 1-1/2"
L	43.5	46	48	50	52
L1	28	28	28	28	28
D	54	54	54	54	54

SIZE	2" x 1/4"	2" x 3/8"	2" x 1/2"	2" x 3/4"	2" x 1"	2" x 1-1/4"	2" x 1-1/2"	2" x 2"
L	42	42.5	45.5	48	50	52	53	56
L1	30	30	30	30	30	30	30	30
D	63	63	63	63	63	63	63	63

Bend 90°

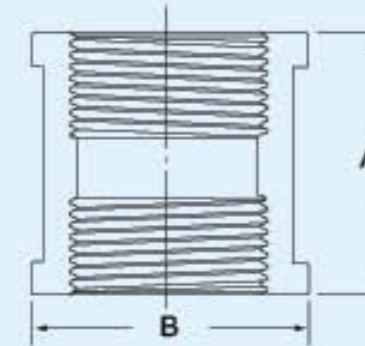


LF29
Class 150
NPT
ISO 7/1 R

Tolerance: ± 1 Unit: mm

SIZE	1/8"	1/4"	3/8"	1/2"	3/4"	1"	1-1/4"	1-1/2"	2"	2-1/2"	3"	4"
D	10.2	13.5	17.2	21.3	26.9	33.7	42.4	48.3	60.3			
L	50	60	70	80	110	120	140	160	190			
R	30	40	45	55	70	80	105	115	125			

Socket Banded

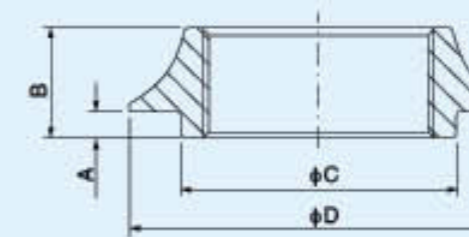


LF30
Class 150
NPT
ISO 7/1 Rp

Tolerance: ± 1 Unit: mm

SIZE	1/8"	1/4"	3/8"	1/2"	3/4"	1"	1-1/4"	1-1/2"	2"	2-1/2"	3"	4"
A	20	25.6	27	34	36	44	52	51	56	68	76.5	80
B	15	21.3	25.7	27.4	32.5	41.6	50	56	69.5	87	98	123

Weld Spud

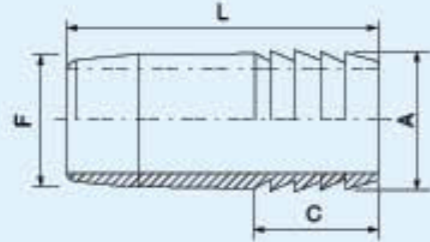


LF31
Class 150
NPT
ISO 7/1 Rp

Tolerance: ± 1 Unit: mm

SIZE	1/4"	3/8"	1/2"	3/4"	1"	1-1/4"	1-1/2"	2"	2-1/2"	3"	4"
A	4	4	4	4.5	5	5	5	5	5	5	5
B	11	12	14	15	17	19	20	21.5	27	28.5	30
C	20	23	28	33	41	49	56	68	83	98	125
D	35	39	44	49	56	65	72	84	102	115	146

Male Hose Nipple



LF32

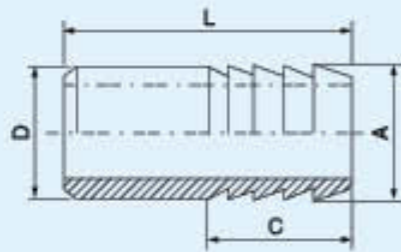
Class 150

**NPT
ISO 7/1 Rp**

Tolerance: ± 1 Unit: mm

SIZE	1/4"	3/8"	1/2"	3/4"	1"	1-1/4"	1-1/2"	2"	2-1/2"	3"
L	42	47	50	60	62	63	65	70	105	120
A	12.8	16.3	21.3	26.1	33	41.6	47.5	60	74	88
C	24	24	24	32	32	32	32	32	45	60

BW Hose Nipple



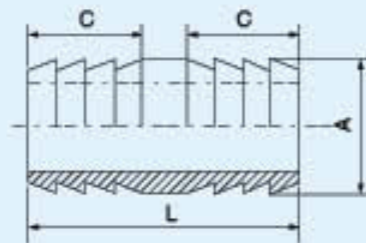
LF33

Class 150

Tolerance: ± 1 Unit: mm

SIZE	1/8"	1/4"	3/8"	1/2"	3/4"	1"	1-1/4"	1-1/2"	2"	2-1/2"	3"
L	32	38	40	45	60	60	65	65	65	90	100
A	9.8	12.8	16.3	21.3	26.1	33	41.6	47.5	60	74	88
C	16	24	24	24	32	32	32	32	32	45	60

Double Hose Nipple



LF34

Class 150

Tolerance: ± 1 Unit: mm

SIZE	1/8"	1/4"	3/8"	1/2"	3/4"	1"	1-1/4"	1-1/2"	2"	2-1/2"	3"
L	42	50	50	50	76	76	76	76	76	105	140
A	9.8	12.8	16.3	21.3	26.1	33	41.6	47.5	60	74	88
C	16	20	20	20	32	32	32	32	32	45	60

Stainless Steel Pipe Barrel Nipple



LF35

ASTMA 312

SCH 40-80

NPT

Stainless Steel Pipe Nipple With American

Type of Nipple	1/8	1/4	3/8	1/2	3/4	1	1 1/8	1 1/2	2	2 1/2	3	3 1/2	4	5	6	
CLOSE	3/4	7/8	1	1 1/8	1 1/4	1 1/2	1 5/8	1 3/4	2	2 1/2	2 3/4	2 7/8	2 3/4	3	3 1/2	
Short and long type	1 1/2	1 1/2	1 1/2	1 1/2	
	2	2	2	2	2	2	2	2	2	
	2 1/2	2 1/2	2 1/2	2 1/2	2 1/2	2 1/2	2 1/2	2 1/2	2 1/2	
	3	3	3	3	3	3	3	3	3	3	3	
	3 1/2	3 1/2	3 1/2	3 1/2	3 1/2	3 1/2	3 1/2	3 1/2	3 1/2	3 1/2	3 1/2	
	4	4	4	4	4	4	4	4	4	4	4	4	4	4
	4 1/2	4 1/2	4 1/2	4 1/2	4 1/2	4 1/2	4 1/2	4 1/2	4 1/2	4 1/2	4 1/2	4 1/2	4 1/2	4 1/2	4 1/2	4 1/2
	5	5	5	5	5	5	5	5	5	5	5	5	5	5	5	5
	5 1/2	5 1/2	5 1/2	5 1/2	5 1/2	5 1/2	5 1/2	5 1/2	5 1/2	5 1/2	5 1/2	5 1/2	5 1/2	5 1/2	5 1/2	5 1/2
	6	6	6	6	6	6	6	6	6	6	6	6	6	6	6	6
	7	7	7	7	7	7	7	7	7	7	7	7	7	7	7	7
	8	8	8	8	8	8	8	8	8	8	8	8	8	8	8	8
9	9	9	9	9	9	9	9	9	9	9	9	9	9	9	9	
10	10	10	10	10	10	10	10	10	10	10	10	10	10	10	10	
11	11	11	11	11	11	11	11	11	11	11	11	11	11	11	11	
12	12	12	12	12	12	12	12	12	12	12	12	12	12	12	12	
.....	

Stainless Steel Pipe Barrel Nipple (Long Type Threaded)



LF36

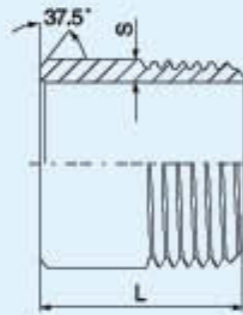
ASTMA 312

SCH 40-80

NPT/NPS

SIZE	1/2"	3/4"	1"	1-1/4"	1-1/2"	2"
D	21.3	26.7	33.4	42.2	48.3	60.3
L	152.4	152.4	152.4	152.4	152.4	152.4

Welding Nipple



LF37

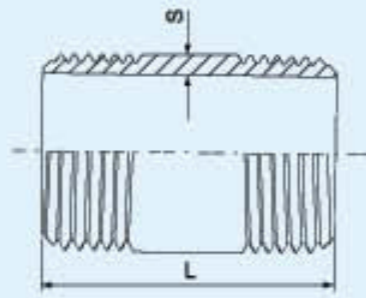
Class 150

DIN2999

Tolerance: ± 1 Unit: mm

SIZE	1/8"	1/4"	3/8"	1/2"	3/4"	1"	1-1/4"	1-1/2"	2"	2-1/2"	3"	4"
S	1.7	2.0	2.0	2.5	2.5	3.2	3.2	3.2	3.6	3.6	4.0	4.5
L	30.0	30.0	30.0	35.0	40.0	40.0	50.0	50.0	50.0	60.0	70.0	80.0

Barrel Nipple



LF38

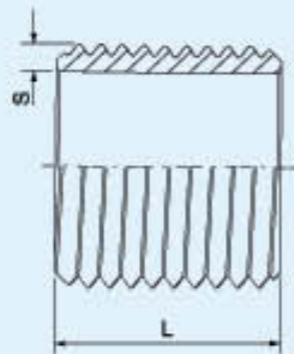
Class 150

DIN2999

Tolerance: ± 1 Unit: mm

SIZE	1/8"	1/4"	3/8"	1/2"	3/4"	1"	1-1/4"	1-1/2"	2"	2-1/2"	3"	4"
S	1.7	2.0	2.0	2.5	2.5	3.2	3.2	3.2	3.6	3.6	4.0	4.5
L	40.0	40.0	40.0	60.0	60.0	60.0	80.0	80.0	100.0	100.0	120.0	120.0

Parauel Nipple



LF39

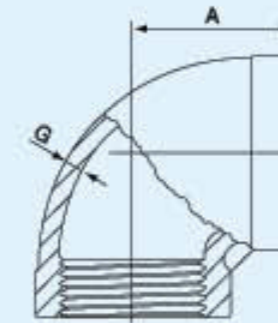
Class 150

DIN2999

Tolerance: ± 1 Unit: mm

SIZE	1/8"	1/4"	3/8"	1/2"	3/4"	1"	1-1/4"	1-1/2"	2"	2-1/2"	3"	4"
S	1.7	2.0	2.0	2.3	2.5	3.2	3.2	3.2	3.6	3.6	4.0	4.5
L	16.0	18.0	22	25	30	35	38	38	45	55	60	70

Elbow 90°



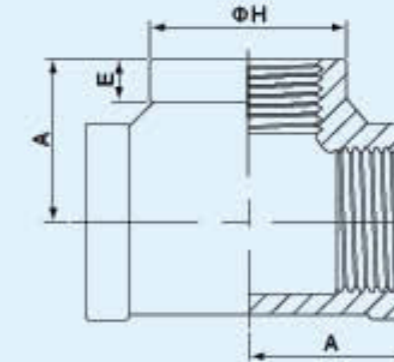
WF01

SP-114

NPT

SIZE	1/8"	1/4"	3/8"	1/2"	3/4"	1"	1-1/4"	1-1/2"	2"	2-1/2"	3"	4"												
A	20.57	0.81	20.57	0.81	23.62	0.93	28.45	1.12	33.27	1.31	38.1	1.5	44.45	1.75	49.02	1.93	57.15	2.25	68.07	2.68	77.72	3.06	96.77	3.81
C	2.29	0.09	2.29	0.09	2.54	0.1	2.54	0.1	3.05	0.12	3.3	0.13	3.56	0.14	3.81	0.15	4.32	0.17	5.33	0.21	5.84	0.23	6.6	0.26

Tee



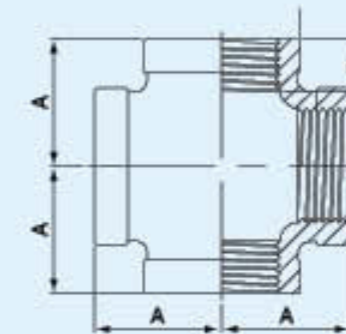
WF02

SP-114

NPT

SIZE	1/8"	1/4"	3/8"	1/2"	3/4"	1"	1-1/4"	1-1/2"	2"	2-1/2"	3"	4"												
A	20.57	0.81	20.57	0.81	23.62	0.93	28.45	1.12	33.27	1.31	38.1	1.5	44.45	1.75	49.02	1.93	57.15	2.25	68.07	2.68	77.72	3.06	96.77	3.81
E(Min.)	5.08	0.2	5.08	0.2	5.33	0.21	6.35	0.25	6.86	0.27	7.62	0.3	8.64	0.34	9.4	0.37	10.67	0.42	12.19	0.48	13.97	0.55	16.76	0.66
H(Min.)	19.05	0.75	21.34	0.84	25.65	1.01	30.48	1.2	37.08	1.46	44.96	1.77	54.61	2.15	61.72	2.43	75.18	2.96	84.07	3.31	101.6	4	128.52	5.06

Cross



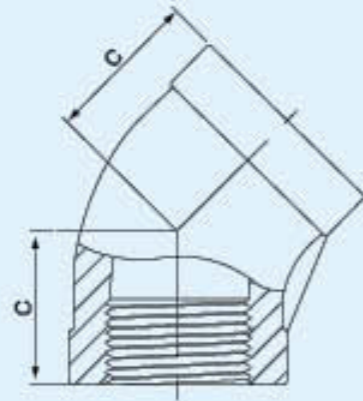
WF03

SP-114

NPT

SIZE	1/8"	1/4"	3/8"	1/2"	3/4"	1"	1-1/4"	1-1/2"	2"	2-1/2"	3"	4"												
A	20.57	0.81	20.57	0.81	23.62	0.93	28.45	1.12	33.27	1.31	38.1	1.5	44.45	1.75	49.02	1.93	57.15	2.25	68.07	2.68	77.72	3.06	96.77	3.81
B (min.)	6.35	0.25	8.13	0.32	9.14	0.36	10.92	0.43	12.7	0.5	14.73	0.58	17.02	0.67	17.78	0.7	19.05	0.75	23.37	0.92	24.89	0.98	27.43	1.08

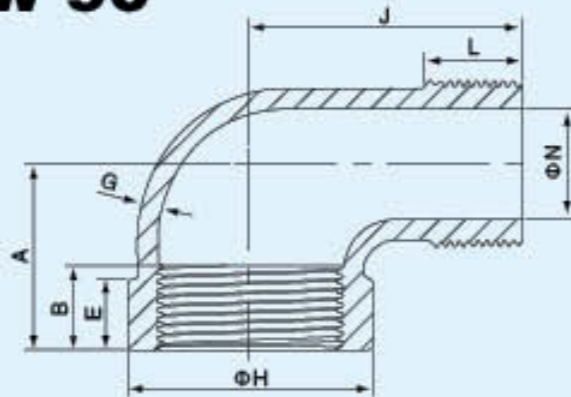
Elbow 45°



WF04
SP-114
NPT

SIZE	1/8"		1/4"		3/8"		1/2"		3/4"		1"		1-1/4"		1-1/2"		2"		2-1/2"		3"		4"	
	mm	in	mm	in	mm	in	mm	in	mm	in	mm	in	mm	in	mm	in	mm	in	mm	in	mm	in	mm	in
C	17.53	0.69	17.53	0.69	20.57	0.81	22.1	0.87	25.4	1	28.45	1.12	33.27	1.31	36.32	1.43	42.67	1.68	49.02	1.93	55.37	2.18	66.55	2.62

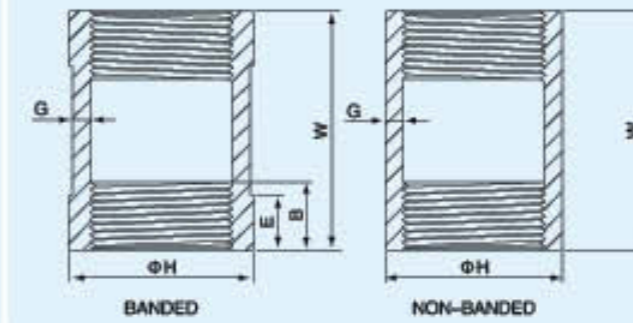
Street Elbow 90°



WF05
SP-114
NPT

SIZE	1/8"		1/4"		3/8"		1/2"		3/4"		1"		1-1/4"		1-1/2"		2"		2-1/2"		3"		4"	
	mm	in	mm	in	mm	in	mm	in	mm	in	mm	in	mm	in	mm	in	mm	in	mm	in	mm	in	mm	in
A	20.57	0.81	20.57	0.81	23.62	0.93	28.45	1.12	33.27	1.31	38.1	1.5	44.45	1.75	49.02	1.93	57.15	2.25	68.07	2.68	77.72	3.06	96.77	3.81
B(Min.)	6.35	0.25	8.13	0.32	9.14	0.36	10.92	0.43	12.7	0.5	14.73	0.58	17.02	0.67	17.78	0.7	19.05	0.75	23.37	0.92	24.89	0.98	27.43	1.08
E(Min.)	5.08	0.2	5.08	0.2	5.33	0.21	6.35	0.25	6.86	0.27	7.62	0.3	8.64	0.34	9.4	0.37	10.67	0.42	12.19	0.48	13.97	0.55	16.76	0.66
C	2.29	0.09	2.29	0.09	2.54	0.1	2.54	0.1	3.05	0.12	3.3	0.13	3.56	0.14	3.81	0.15	4.32	0.17	5.33	0.21	5.84	0.23	6.6	0.26
H(Min.)	19.05	0.75	21.34	0.84	25.65	1.01	30.48	1.2	37.08	1.46	44.96	1.77	54.61	2.15	61.72	2.43	75.18	2.96	84.07	3.31	101.6	4	128.52	5.06
J	26.92	1.06	29.97	1.18	36.32	1.43	41.15	1.62	47.5	1.87	53.85	2.12	63.5	2.5	69.85	2.75	82.55	3.25	98.3	3.87	114.3	4.5	144.27	5.68
L(Min.)	6.6	0.26	10.16	0.4	10.41	0.41	13.46	0.53	13.97	0.55	17.27	0.68	18.03	0.71	18.29	0.72	19.3	0.76	28.96	1.14	30.48	1.2	33.02	1.3
N(Min.)	5.08	0.2	6.6	0.26	9.4	0.37	12.95	0.51	17.53	0.69	23.11	0.91	30.23	1.19	35.31	1.39	45.47	1.79	55.88	2.2	70.61	2.78	93.98	3.7

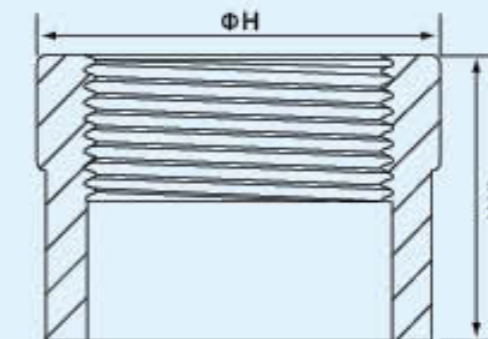
Coupling



WF06
SP-114
NPT

SIZE	1/8"		1/4"		3/8"		1/2"		3/4"		1"		1-1/4"		1-1/2"		2"		2-1/2"		3"		4"	
	mm	in	mm	in	mm	in	mm	in	mm	in	mm	in	mm	in	mm	in	mm	in	mm	in	mm	in	mm	in
B(Min.)	6.35	0.25	8.13	0.32	9.14	0.36	10.92	0.43	12.7	0.5	14.73	0.58	17.02	0.67	17.78	0.7	19.05	0.75	23.37	0.92	24.89	0.98	27.43	1.08
E(Min.)	5.08	0.2	5.08	0.2	5.33	0.21	6.35	0.25	6.86	0.27	7.62	0.3	8.64	0.34	9.4	0.37	10.67	0.42	12.19	0.48	13.97	0.55	16.76	0.66
C	2.29	0.09	2.29	0.09	2.54	0.1	2.54	0.1	3.05	0.12	3.3	0.13	3.56	0.14	3.81	0.15	4.32	0.17	5.33	0.21	5.84	0.23	6.6	0.26
H(Min.)	19.05	0.75	21.34	0.84	25.65	1.01	30.48	1.2	37.08	1.46	44.96	1.77	54.61	2.15	61.72	2.43	75.18	2.96	84.07	3.31	101.6	4	128.52	5.06
W(Min.)	25.4	1	25.4	1	28.45	1.12	35.05	1.38	38.1	1.5	41.15	1.62	50.8	2	53.85	2.12	63.5	2.5	72.9	2.87	80.77	3.18	93.47	3.68

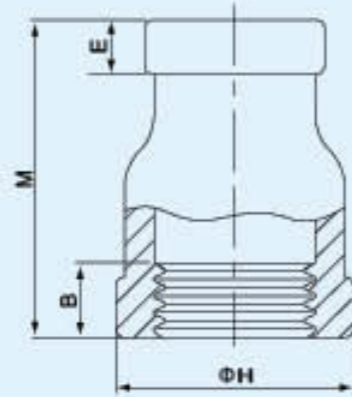
Half Coupling



WF07
SP-114
NPT

SIZE	1/8"		1/4"		3/8"		1/2"		3/4"		1"		1-1/4"		1-1/2"		2"		2-1/2"		3"		4"	
	mm	in	mm	in	mm	in	mm	in	mm	in	mm	in	mm	in	mm	in	mm	in	mm	in	mm	in	mm	in
H(Min.)	19.05	0.75	21.34	0.84	25.65	1.01	30.48	1.2	37.08	1.46	44.96	1.77	54.61	2.15	61.72	2.43	75.18	2.96	84.07	3.31	101.6	4	128.52	5.06
W(Min.)	25.4	1	25.4	1	28.45	1.12	35.05	1.38	38.1	1.5	41.15	1.62	50.8	2	53.85	2.12	63.5	2.5	72.9	2.87	80.77	3.18	93.47	3.68

Reducing Socket



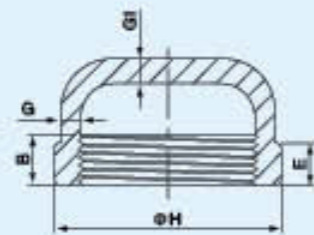
WF08

SP-114

NPT

SIZE	1/8"		1/4"		3/8"		1/2"		3/4"		1"		1-1/4"		1-1/2"		2"		2-1/2"		3"		4"	
	mm	in	mm	in	mm	in	mm	in	mm	in	mm	in	mm	in	mm	in	mm	in	mm	in	mm	in	mm	in
B (Min.)	6.35	0.25	8.13	0.32	9.14	0.36	10.92	0.43	12.7	0.5	14.73	0.58	17.02	0.67	17.78	0.7	19.05	0.75	23.37	0.92	24.89	0.98	27.43	1.08
E (Min.)	5.08	0.2	5.08	0.2	5.33	0.21	6.35	0.25	6.86	0.27	7.62	0.3	8.64	0.34	9.4	0.37	10.67	0.42	12.19	0.48	13.97	0.55	16.76	0.66
H (Min.)	19.05	0.75	21.34	0.84	25.65	1.01	30.48	1.2	37.08	1.46	44.96	1.77	54.61	2.15	61.72	2.43	75.18	2.96	84.07	3.31	101.6	4	128.52	5.06
M (Min.)	-	-	25.4	1	28.45	1.12	35.05	1.38	38.1	1.5	41.15	1.62	50.8	2	53.85	2.12	63.5	2.5	82.55	3.25	93.47	3.68	111.25	4.38

Round Cap



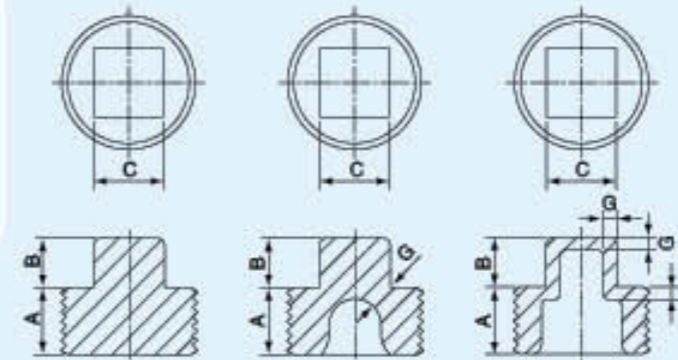
WF09

SP-114

NPT

SIZE	1/8"		1/4"		3/8"		1/2"		3/4"		1"		1-1/4"		1-1/2"		2"		2-1/2"		3"		4"	
	mm	in	mm	in	mm	in	mm	in	mm	in	mm	in	mm	in	mm	in	mm	in	mm	in	mm	in	mm	in
B (Min.)	6.35	0.25	8.13	0.32	9.14	0.36	10.92	0.43	12.7	0.5	14.73	0.58	17.02	0.67	17.78	0.7	19.05	0.75	23.37	0.92	24.89	0.98	27.43	1.08
E (Min.)	5.08	0.2	5.08	0.2	5.33	0.21	6.35	0.25	6.86	0.27	7.62	0.3	8.64	0.34	9.4	0.37	10.67	0.42	12.19	0.48	13.97	0.55	16.76	0.66
C	2.29	0.09	2.29	0.09	2.54	0.1	2.54	0.1	3.05	0.12	3.3	0.13	3.56	0.14	3.81	0.15	4.32	0.17	5.33	0.21	5.84	0.23	6.6	0.26
H (Min.)	19.05	0.75	21.34	0.84	25.65	1.01	30.48	1.2	37.08	1.46	44.96	1.77	54.61	2.15	61.72	2.43	75.18	2.96	84.07	3.31	101.6	4	128.52	5.06
P (Min.)	17.27	0.68	17.27	0.68	20.57	0.81	23.62	0.93	26.92	1.06	33.27	1.31	41.15	1.62	44.45	1.75	50.8	2	57.15	2.25	63.5	2.5		
G1 (Min.)	2.29	0.09	2.29	0.09	2.54	0.1	3.05	0.12	3.3	0.13	3.81	0.15	4.32	0.17	4.83	0.19	5.59	0.22	6.35	0.25	7.37	0.29	9.14	0.36

Square Plug



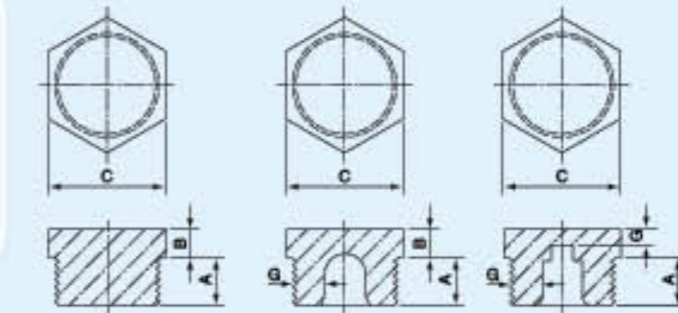
WF10

SP-114

NPT

SIZE	1/8"		1/4"		3/8"		1/2"		3/4"		1"		1-1/4"		1-1/2"		2"		2-1/2"		3"		4"	
	mm	in	mm	in	mm	in	mm	in	mm	in	mm	in	mm	in	mm	in	mm	in	mm	in	mm	in	mm	in
A (Min.)	9.4	0.37	11.18	0.44	12.19	0.48	14.22	0.56	16	0.63	19.05	0.75	20.32	0.8	21.08	0.83	22.35	0.88	27.18	1.07	28.7	1.13	30.99	1.22
B (Min.)	6.1	0.24	7.11	0.28	7.87	0.31	9.65	0.38	11.18	0.44	12.7	0.5	14.22	0.56	15.75	0.62	17.27	0.68	18.8	0.74	20.32	0.8	25.4	1
C	9/32	9/32	3/8	3/8	7/16	7/16	9/16	9/16	5/8	5/8	13/16	13/16	15/16	15/16	1-1/8	1-1/8	1-5/16	1-5/16	1-1/2	1-1/2	1-11/16	1-11/16	2-1/4	2-1/4
G	-	-	-	-	-	-	4.06	0.16	4.57	0.18	5.08	0.2	5.59	0.22	6.1	0.24	6.6	0.26	7.37	0.29	7.87	0.31	9.65	0.38

Hexagon Plug



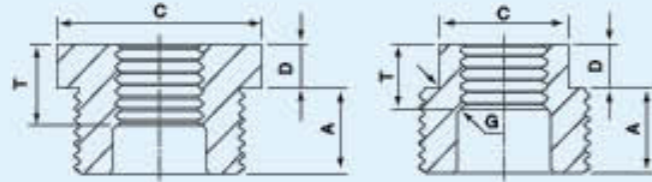
WF11

SP-114

NPT

SIZE	1/8"		1/4"		3/8"		1/2"		3/4"		1"		1-1/4"		1-1/2"		2"		2-1/2"		3"		4"	
	mm	in	mm	in	mm	in	mm	in	mm	in	mm	in	mm	in	mm	in	mm	in	mm	in	mm	in	mm	in
A (Min.)	9.4	0.37	11.18	0.44	12.19	0.48	14.22	0.56	16	0.63	19.05	0.75	20.32	0.8	21.08	0.83	22.35	0.88	27.18	1.07	28.7	1.13	30.99	1.22
B (Min.)	3.56	0.14	3.56	0.14	4.06	0.16	4.83	0.19	5.59	0.22	6.35	0.25	7.11	0.28	7.87	0.31	8.64	0.34	9.4	0.37	10.16	0.4	12.7	0.5
C	12.7	0.5	15.75	0.62	17.27	0.68	22.1	0.87	30.48	1.2	36.32	1.43	44.7	1.76	50.8	2	62.99	2.48	75.69	2.98	98.04	3.86	117.35	4.62
G	-	-	-	-	-	-	4.06	0.16	4.57	0.18	5.08	0.2	5.59	0.22	6.1	0.24	6.6	0.26	7.37	0.29	7.87	0.31	9.65	0.38

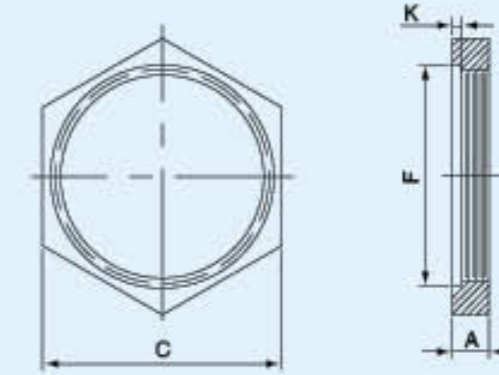
Hexagon Bushing



WF12
SP-114
NPT

SIZE	A(Min)		T(Min)		C		D(Min)		C		
	mm	in	mm	in	mm	in	mm	in	mm	in	
1/8"	1/8"	11.18	0.44	6.6	0.26	-	-	3.05	0.12	5/8	5/8
	1/8"	12.7	0.5	6.6	0.26	-	-	4.06	0.16	11/16	11/16
3/8"	1/4"	12.7	0.5	10.16	0.4	-	-	4.06	0.16	11/16	11/16
	3/8"	14.22	0.56	6.6	0.26	-	-	4.83	0.19	7/8	7/8
1/2"	1/4"	14.22	0.56	10.16	0.4	-	-	4.83	0.19	7/8	7/8
	3/8"	14.22	0.56	10.41	0.41	-	-	4.83	0.19	7/8	7/8
3/4"	1/8"	15.75	0.62	6.6	0.26	-	-	5.99	0.22	1-1/16	1-1/16
	1/4"	15.75	0.62	10.16	0.4	-	-	5.99	0.22	1-1/16	1-1/16
	3/8"	15.75	0.62	10.41	0.41	-	-	5.99	0.22	1-1/16	1-1/16
	1/2"	15.75	0.62	13.46	0.53	-	-	5.99	0.22	1-1/16	1-1/16
1"	1/8"	19.05	0.75	6.6	0.26	-	-	6.35	0.25	1-3/8	1-3/8
	1/4"	19.05	0.75	10.16	0.4	-	-	6.35	0.25	1-3/8	1-3/8
	3/8"	19.05	0.75	10.41	0.41	-	-	6.35	0.25	1-3/8	1-3/8
	1/2"	19.05	0.75	13.46	0.53	-	-	6.35	0.25	1-3/8	1-3/8
1-1/4"	3/4"	19.05	0.75	13.97	0.55	-	-	6.35	0.25	1-3/8	1-3/8
	1/4"	20.57	0.81	10.16	0.4	4.57	0.18	7.11	0.28	1-3/4	1-3/4
	3/8"	20.57	0.81	10.41	0.41	4.57	0.18	7.11	0.28	1-3/4	1-3/4
	1/2"	20.57	0.81	13.46	0.53	4.57	0.18	7.11	0.28	1-3/4	1-3/4
1-1/2"	3/4"	20.57	0.81	13.97	0.55	-	-	7.11	0.28	1-3/4	1-3/4
	1"	20.57	0.81	17.27	0.68	-	-	7.11	0.28	1-3/4	1-3/4
	1/4"	20.57	0.81	10.16	0.4	5.08	0.2	7.87	0.31	2	2
	3/8"	20.57	0.81	10.41	0.41	5.08	0.2	7.87	0.31	2	2
1-1/2"	1/2"	20.57	0.81	13.46	0.53	5.08	0.2	7.87	0.31	2	2
	3/4"	20.57	0.81	13.97	0.55	5.08	0.2	7.87	0.31	2	2
	1"	20.57	0.81	17.27	0.68	-	-	7.87	0.31	2	2
	1-1/4"	20.57	0.81	18.03	0.71	-	-	7.87	0.31	2	2
2"	1/4"	22.35	0.88	10.16	0.4	5.99	0.22	8.64	0.34	2-1/2	2-1/2
	3/8"	22.35	0.88	10.41	0.41	5.99	0.22	8.64	0.34	2-1/2	2-1/2
	1/2"	22.35	0.88	13.46	0.53	5.99	0.22	8.64	0.34	2-1/2	2-1/2
	3/4"	22.35	0.88	13.97	0.55	5.99	0.22	8.64	0.34	2-1/2	2-1/2
2-1/2"	1"	22.35	0.88	17.27	0.68	5.99	0.22	8.64	0.34	2-1/2	2-1/2
	1-1/4"	22.35	0.88	18.03	0.71	-	-	8.64	0.34	2-1/2	2-1/2
	1-1/2"	22.35	0.88	18.29	0.72	-	-	8.64	0.34	2-1/2	2-1/2
	1/2"	26.92	1.06	13.46	0.53	6.1	0.24	9.65	0.38	3	3
2-1/2"	3/4"	26.92	1.06	13.97	0.55	6.1	0.24	9.65	0.38	3	3
	1"	26.92	1.06	17.27	0.68	6.1	0.24	9.65	0.38	3	3
	1-1/4"	26.92	1.06	18.03	0.71	6.1	0.24	9.65	0.38	3	3
	1-1/2"	26.92	1.06	18.29	0.72	-	-	9.65	0.38	3	3
3"	2"	26.92	1.06	19.3	0.76	-	-	9.65	0.38	3	3
	1/2"	28.45	1.12	13.46	0.53	6.6	0.26	10.41	0.41	3-1/2	3-1/2
	3/4"	28.45	1.12	13.97	0.55	6.6	0.26	10.41	0.41	3-1/2	3-1/2
	1"	28.45	1.12	17.27	0.68	6.6	0.26	10.41	0.41	3-1/2	3-1/2
3"	1-1/4"	28.45	1.12	17.78	0.7	6.6	0.26	10.41	0.41	3-1/2	3-1/2
	1-1/2"	28.45	1.12	18.29	0.72	6.6	0.26	10.41	0.41	3-1/2	3-1/2
	2"	28.45	1.12	19.3	0.76	-	-	10.41	0.41	3-1/2	3-1/2
	2-1/2"	28.45	1.12	28.96	1.14	-	-	10.41	0.41	3-1/2	3-1/2
4"	1"	31.75	1.25	17.27	0.68	7.87	0.31	15.24	0.6	4-5/8	4-5/8
	1-1/4"	31.75	1.25	17.78	0.7	7.87	0.31	15.24	0.6	4-5/8	4-5/8
	1-1/2"	31.75	1.25	18.29	0.72	7.87	0.31	15.24	0.6	4-5/8	4-5/8
	2"	31.75	1.25	19.3	0.76	7.87	0.31	15.24	0.6	4-5/8	4-5/8
4"	2-1/2"	31.75	1.25	28.96	1.14	7.87	0.31	15.24	0.6	4-5/8	4-5/8
	3"	31.75	1.25	30.48	1.2	-	-	12.7	0.5	4-5/8	4-5/8

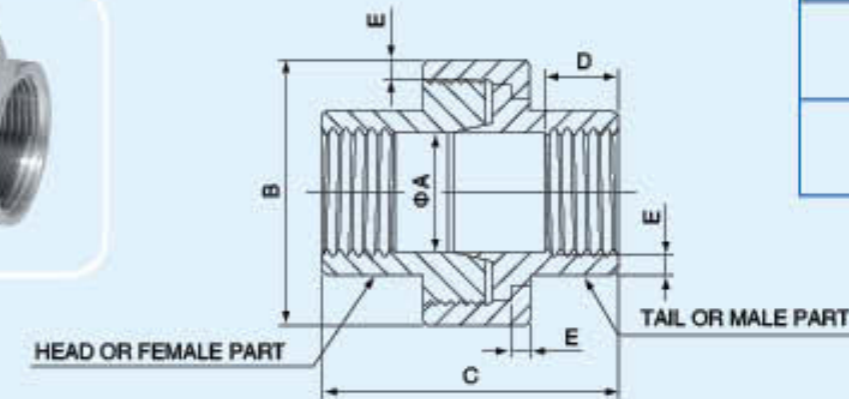
Lock Nut



WF13
SP-114
NPT

SIZE	1/8"		1/4"		3/8"		1/2"		3/4"		1"		1-1/4"		1-1/2"		2"		2-1/2"		3"		4"	
	mm	in	mm	in	mm	in	mm	in	mm	in	mm	in	mm	in	mm	in	mm	in	mm	in	mm	in	mm	in
A (Min.)	4.83	0.19	6.35	0.25	7.11	0.28	7.87	0.31	8.64	0.34	9.65	0.38	10.67	0.42	11.94	0.47	13.64	0.53	14.99	0.59	17.02	0.67	20.32	0.5
C (Min.)	17.53	0.69	21.34	0.84	25.4	1	29.97	1.18	36.32	1.43	44.45	1.75	53.34	2.1	59.69	2.35	73.15	2.88	88.9	3.5	108.46	4.27	136.65	5.38
F (Min.)	12.7	0.5	16.76	0.66	19.56	0.77	24.64	0.97	31.24	1.23	38.1	1.5	47.24	1.86	53.85	2.12	66.8	2.63	80.77	3.18	97.54	3.84	127	5
K	1.02	0.04	1.52	0.06	1.52	0.06	1.52	0.06	1.52	0.06	1.52	0.06	1.52	0.06	1.52	0.06	2.29	0.09	2.29	0.09	2.29	0.09	2.29	0.09

Union F/F

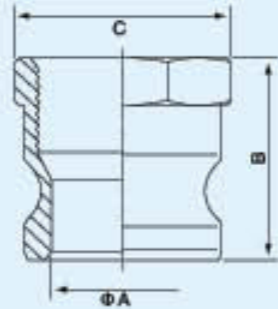


WF14
SP-114
NPT

SIZE	1/8"		1/4"		3/8"		1/2"		3/4"		1"		1-1/4"		1-1/2"		2"		2-1/2"		3"		4"	
	mm	in	mm	in	mm	in	mm	in	mm	in	mm	in	mm	in	mm	in	mm	in	mm	in	mm	in	mm	in
A (Min.)	5.33	0.21	9.14	0.36	13.21	0.52	15.49	0.61	20.32	0.8	25.4	1	33.27	1.31	39.37	1.55	51.56	2.03	60.45	2.38	76.2	3	102.36	4.03
B (Min.)	23.62	0.93	27.94	1.1	32	1.26	36.83	1.45	43.43	1.71	52.58	2.07	63.5	2.5	71.63	2.82	86.61	3.41	104.65	4.12	120.65	4.75	152.4	6
C (Min.)	32	1.26	36.58	1.44	40.89	1.61	43.69	1.72	49.28	1.94	52.32	2.06	57.4	2.26	61.21	2.41	69.85	2.75	81.79	3.22	88.9	3.5	97.79	3.85
D (Min.)	6.35	0.25	8.13	0.32	9.14	0.36	10.92	0.43	12.7	0.5	14.73	0.58	17.02	0.67	17.78	0.7	19.05	0.75	23.37	0.92	24.89	0.98	27.43	1.08
E (Min.)	2.29	0.09	2.29	0.09	2.54	0.1	2.54	0.1	3.05	0.12	3.3	0.13	3.56	0.14	3.81	0.15	4.318	0.17	5.33	0.21	5.84	0.23	6.6	0.26

Adaptor Female Thread

TYPE A

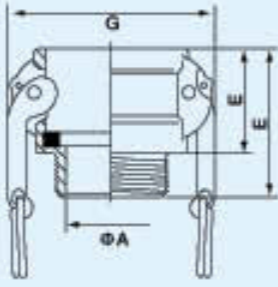


Unit: mm

SIZE	1/2"	3/4"	1"	1-1/4"	1-1/2"	2"	2-1/2"	3"	4"	6"
B: Overall Length	40.9	39	48.5	52.5	54.7	63.5	68	70	74.6	79.2
A: Min I.D.	14.3	21	23.8	30.8	38.5	46	58	73.2	98.2	150
C: Max Across Centres of Adaptors	28.8	39.2	43.8	51.9	60.4	70.4	82.3	97.8	126.8	187.6

Coupler Male Thread

TYPE B

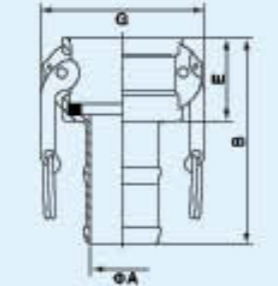


Unit: mm

SIZE	1/2"	3/4"	1"	1-1/4"	1-1/2"	2"	2-1/2"	3"	4"	6"
C: Max O.D.	45.7	53.3	60.9	82.6	90.3	99.8	112.4	137.6	165.6	238.3
B: Overall Length	47.3	51	58	67.2	65.7	75.4	83.3	86.5	88.8	103.5
E: Exposed Length	31.4	32	39	44.5	45	50	54.3	55.5	55.5	65.5
A: Min I.D.	15	19	25	32.6	39	50.8	63	76.2	100.8	153

Coupler Hose Shank

TYPE C

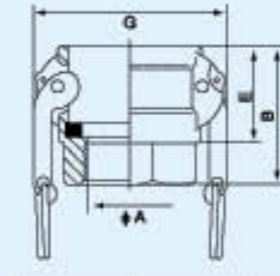


Unit: mm

SIZE	1/2"	3/4"	1"	1-1/4"	1-1/2"	2"	2-1/2"	3"	4"	6"
C: Max O.D.	45.7	53.3	60.9	82.6	90.3	99.8	112.4	137.6	165.6	238.3
B: Overall Length	87	82.8	96.2	102.5	104	129	142.3	157.1	163.5	229
E: Exposed Length	31.4	32	39	44.5	45	50	54.3	55.5	55.5	65.5
A: Min I.D.	7.7	13.8	19.8	25.9	32.3	44.5	56.7	68	93.4	144.8
D: Shank O.D.	14.6	21	27	33.7	40.1	52.7	66.3	79	104.4	156.8

Coupler Female Thread

TYPE D

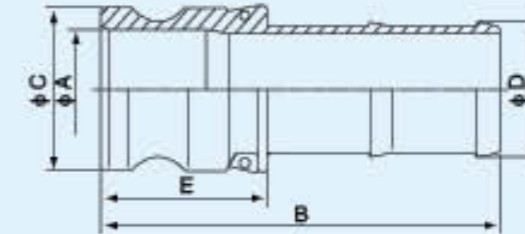


Unit: mm

SIZE	1/2"	3/4"	1"	1-1/4"	1-1/2"	2"	2-1/2"	3"	4"	6"
G: Max O.D.	45.7	53.3	60.9	82.6	90.3	99.8	112.4	137.6	165.6	238.3
B: Overall Length	49.5	51	61	67.5	67	72.2	83.3	86.5	88.8	103.5
E: Exposed Length	31.4	32	39	44.5	45	50	54.3	55.5	55.5	65.5
A: Min I.D.	18	21	25	34.9	39	50.8	63	76.2	100.8	152.6

Adaptor Hose Shank

TYPE E

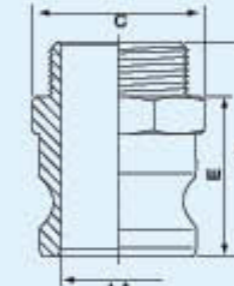


Unit: mm

SIZE	1/2"	3/4"	1"	1-1/4"	1-1/2"	2"	2-1/2"	3"	4"	6"
C: Max O.D.	30.3	35	38	48	55.4	65.3	79.5	93.5	121.5	179
B: Overall Length	86.5	86.3	105.8	109.5	113	138.5	149.5	166.6	174.5	238.5
E: Exposed Length	42	35.3	48.6	51.5	54	59.5	61.5	65	66.5	75
A: Min I.D.	7.8	13.8	19.8	25.9	32.3	44.5	56.7	68	93.5	144.8
D: Shank O.D.	14.6	21	27	33.7	40.1	52.7	66.3	79	104.4	156.8

Adaptor Male Thread

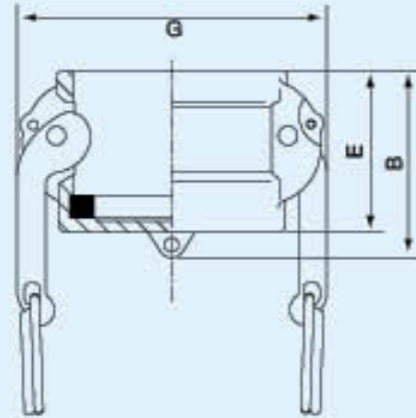
TYPE F



Unit: mm

SIZE	1/2"	3/4"	1"	1-1/4"	1-1/2"	2"	2-1/2"	3"	4"	6"
B: Overall Length	49	58	67.5	73.2	74.7	87.1	97	101	107.9	116.3
E: Exposed Length	34	39	48.5	52.5	54	61.7	68	70	74.6	79.2
A: Min I.D.	14.2	21	23.8	30.8	38.5	46	58	73.2	98.2	150
C: Max Across Centres of Adaptors	28.6	39.2	43.8	51.9	60.4	70.4	82.3	97.8	126.8	187.6

Dust Cap

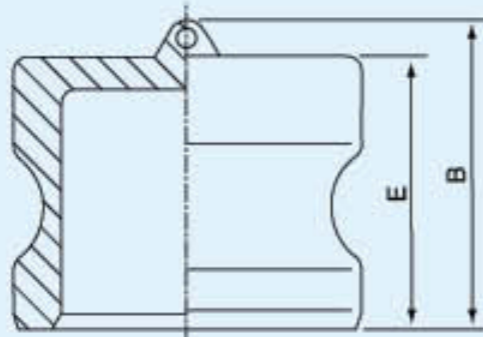


TYPE DC

Unit: mm

SIZE	1/2"	3/4"	1"	1-1/4"	1-1/2"	2"	2-1/2"	3"	4"	6"
C: Max O.D.	45.7	53.3	60.9	82.6	90.3	99.8	112.4	137.6	165.6	238.3
B: Overall Length	43.2	46	53	58.5	59.4	65.2	69.8	71.5	72	90
E: Exposed Length	33.6	34	41	46.5	47.7	53.2	57.8	59.5	60	70.5

Dust Plug



TYPE DP

Unit: mm

SIZE	1/2"	3/4"	1"	1-1/4"	1-1/2"	2"	2-1/2"	3"	4"	6"
B: Overall Length	35.8	40.5	48.5	54	56.6	63.4	65	67	68.8	85
E: Exposed Length	27.6	27.5	36.5	42	44	50.8	53	55	52.6	65.5

1PC Screwed Ball Valve

Model: BT-1R

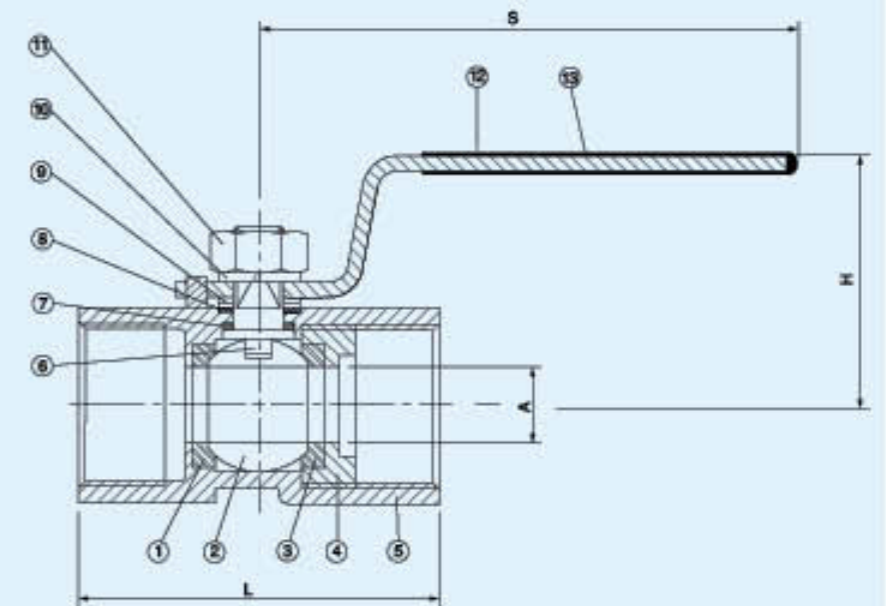
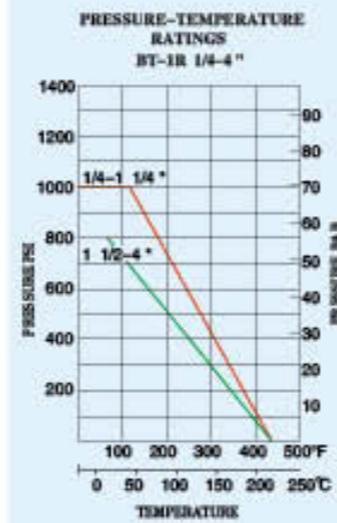
Size: 1/4" ~ 4" REDUCED BORE (800PSI/1000PSI)



Threaded: BSPT,BSP,NPT,DIN2999,ISO228/1
Materials: CF8M(SS316), CF8(SS304)

Features:

- *Investment casting body
- *Working pressure 800/1000PSI for W.O.G.
- *Adjustable stem packing
- *Pure teflon seals and seats
- *Temperature range: -60 to 450° F
- *Blow-out proof stem, and safe pressure-reducing hole
- *100% leakage tested at 100PSI air under water
- *Hydrostatic test pressure: 1500PSI
- *Locking device(optional)



Material List

NO.	PARTS NAME	MATERIAL	QTY
1	SEAT	PTFE	2
2	BALL	316/304	1
3	JOINT GASKET	PTFE	1
4	BODY INSERT	CF8M	1
5	BODY	CF8M	1
6	STEM	316	1
7	THRUST WASHER	PTFE	1
8	STEM PACKING	PTFE	1
9	GLAND NUT	304	1
10	STEM WASHER	304	1
11	STEM NUT	304	1
12	PLASTIC SLEEVE	PVC	1
13	HANDLE	SS 304	1

Dimensions

SIZE	ITEM	S	H ±1	A	L ±0.5
1/4"		59	28.5	4.6	39.0
3/8"		79	33.5	7.0	44.0
1/2"		87	38.0	9.0	56.5
3/4"		85	41.5	12.5	58.5
1"		99	46.0	16.0	71.0
1-1/4"		99	51.5	20.0	78.0
1-1/2"		126	65.5	25.0	83.0
2"		126	71.5	32.0	100.0
2-1/2"		176	87.5	38.0	122.0
3"		176	95.0	50.0	142.0
4"					

2PC Screwed Ball Valve

Model: BTL-2F

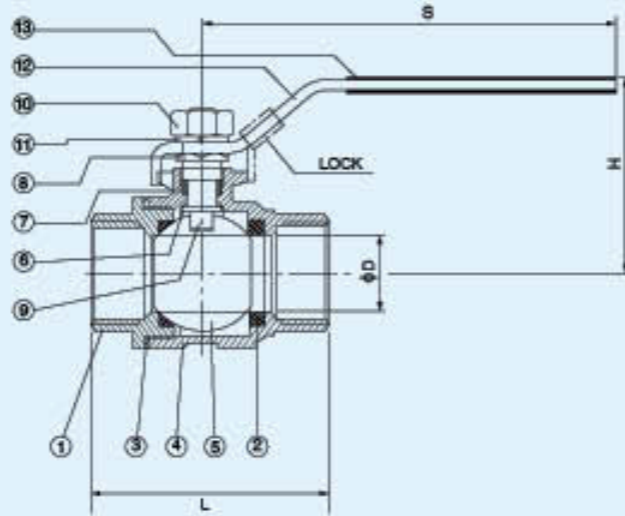
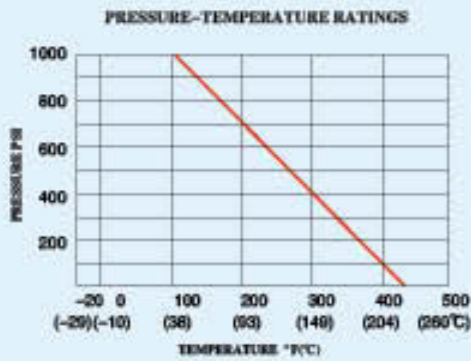
Size: 1/4" ~ 4" FULL BORE (1000PSI)



Threaded: BSPT,BSP,NPT,DIN2999,ISO 228/1
Materials: CF8M(SS316),CF8(SS304)

Features:

- *Investment casting body
- *Working pressure 1000PSI for W.O.G.
- *Adjustable stem packing
- *Pure teflon seals and seats
- *Temperature range: -60 to 450° F
- *Blow-out proof stem and safe pressure-reducing hole
- *100% leakage tested at 100PSI air under water
- *Hydrostatic test pressure: 1500PSI
- *Locking device(optional)



Materials List

NO.	PARTS NAME	MATERIAL	QTY
1	CAP	316	1
2	BALL SEAT	PTFE	2
3	JOINT GASKET	PTFE	1
4	BODY	316	1
5	BALL	316	1
6	THRUST WASHER	PTFE	1
7	STEM PACKING	PTFE	1
8	GLAND NUT	304	1
9	STEM	316	1
10	STEM NUT	304	1
11	SPRING WASHER	304	1
12	HANDLE	304	1
13	PLASTIC SLEEVE	PVC	1

Dimensions Unit: mm

SIZE	ITEM	D	L	H	S
1/4"		12.7	47.3	46.6	99.5
3/8"		12.7	47.3	46.6	99.5
1/2"		15.0	58.2	48.2	99.5
3/4"		20.0	65.5	61.7	126.5
1"		25.0	76.5	69.3	126.5
1-1/4"		32.0	90.0	80.7	153.0
1-1/2"		38.0	98.3	87.2	153.0
2"		50.8	121.7	95.4	192.0
2-1/2"		65.0	145.2	119.5	248.0
3"		76.0	167.0	130.0	248.0
4"		100.0	234.0	167.2	320.0

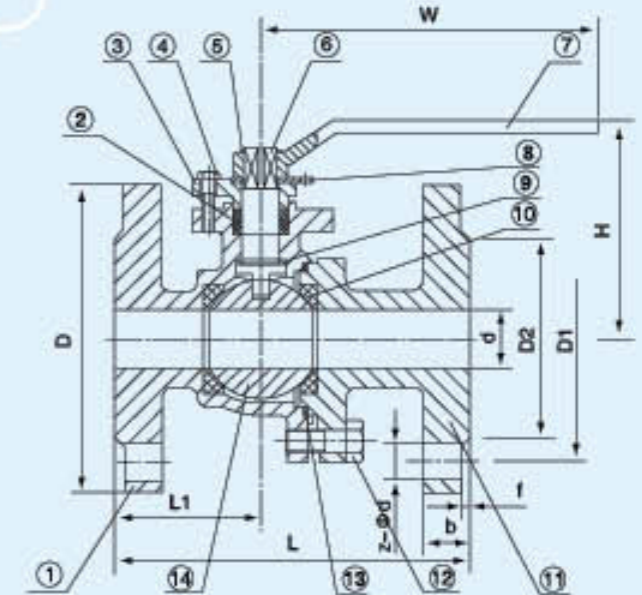
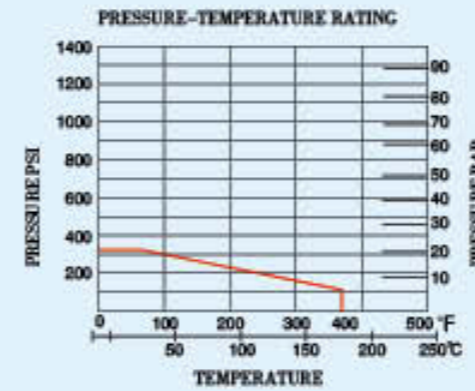
2PC Flanged Ball Valve

Model: FBV-PC

Size: 1/2"~8"



Investment casting for body and cap
Full bore
Flanged ends: ANSI B16.5
Face to face: ANSI B16.10
Pressure rating: 150 Lb
Working temperature: -25°C+180°C
Material: CF8M, CF8, CF3M, WCB



Dimension List

SIZE	d	L	D	D1	D2	b	f	2-φd	H	W	KGS
1/2"	15	108	89	60.5	35	11	2	4-φ15	65	120	1.80
3/4"	20	117	98	70	43	11	2	4-φ15	70	130	3.00
1"	25	127	108	79.5	51	12	2	4-φ15	85	150	4.50
1-1/4"	32	140	117	89	64	13	2	4-φ15	100	160	5.50
1-1/2"	40	165	127	98.5	73	15	2	4-φ15	120	205	5.80
2"	50	178	152	120.5	92	16	2	4-φ19	130	205	8.90
2-1/2"	65	190	178	139.5	105	18	2	4-φ19	140	210	9.80
3"	80	203	190	152.5	127	19	2	4-φ19	170	300	17.00
4"	100	229	229	190.5	157	24	2	8-φ19	205	300	26.20
5"	125	356	254	216	186	24	2	8-φ22	260	800	39.10
6"	150	394	279	241.5	216	26	2	8-φ22	350	900	58.20
8"	200	457	343	298.5	270	29	2	8-φ22	500	1000	102.60

Material List

ITEM	PART	MATERIAL	QTY
1	BODY	CF8M	1
2	STEM PACKING	PTFE	1
3	GLAND	CF8M	1
4	GLAND BOLT	SS304	2
5	SNAP RING	SS304	1
6	STEM	SS316	1
7	HANDLE	SSCS	1
8	STOPER	SS304	1
9	THRUST WASHER	PTFE	1
10	BALL SEAT	R-PTFE15%	2
11	CAP	CF8M	1
12	BOLT	SS304	4(6)
13	BODY GASKET	PTFE	1
14	BALL	SS316	1

3PC Screwed Ball Valve

Model: BT-3F

Size: 1/4" ~ 4" FULL BORE (1000PSI)

STAINLESS STEEL AISI 316(DIN 1.4408)

SARBON STEEL S-45C(DIN 1.0619)

Features:

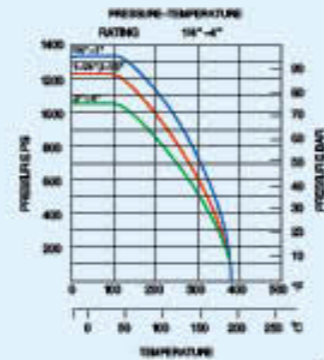
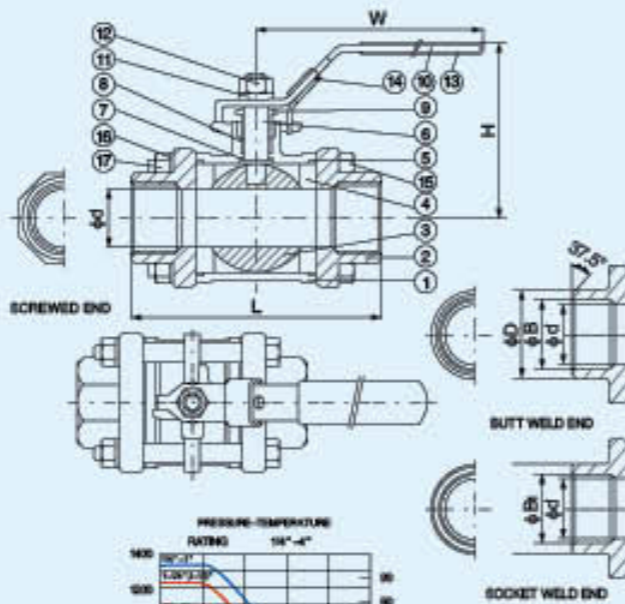
- *Pipe thread in accordance with ANSI B2.1, BS21 1973, DIN259/2999, ISO 228
- *Lug body
- *Blow-out proof stem/Full port
- *Investment casting body and cap
- *1000PSI(69 BAR)W.O.G.
- *Material: ASTM-A351-CF8M, ASTM-A351-CF8 & ASTM-A216-WCB

***OPTION: Locking device**



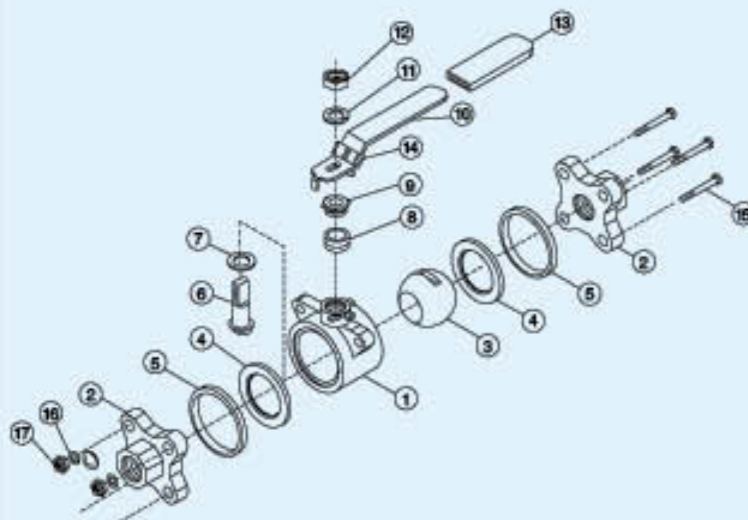
Materials List

ITEM	PARTS	QTY	MATERIALS	
			A3N	A3N-C
1	BODY	1	ASTM-A351-CF8M	ASTM-A216-WCB
2	CAP	2	ASTM-A351-CF8M	ASTM-A216-WCB
3	BALL	1	ASTM-A351-CF8M	ASTM-A351-CF8M
4	BALL SEAT	2	PTFE	PTFE
5	JOINT GASKET	2	PTFE	PTFE
6	STEM	1	AISI 316	AISI 316
7	THRUST WASHER	1	PTFE	PTFE
8	STEM PACKING	2	PTFE	PTFE
9	GLAND NUT	1	AISI 304	AISI 304
10	HANDLE	1	AISI 304	AISI 304
11	STEM WASHER	1	AISI 304	AISI 304
12	STEM NUT	1	AISI 304	AISI 304
13	PLASTIC COVER	1	P.V.C	P.V.C
14	LOCK DEVICE	1	AISI 304	AISI 304
15	BOLT	43", 4" x 6PCS	AISI 304	AISI 304
16	SPRING WASHER	43", 4" x 6PCS	AISI 304	AISI 304
17	HEX NUT	43", 4" x 6PCS	AISI 304	AISI 304



Dimensions Unit: mm

ITEM SIZE	d	L	H	W	D	B	B1	Cv FACTOR	TORQUE lbf-in	KC
1/4"	11.6	58	50	110	16.7	12	14	6.6	40	0.38
3/8"	12.8	58	50	110	18	14	18	7.9	40	0.36
1/2"	15	68.5	55	115	22	15	21.7	11.2	54	0.43
3/4"	20	84	60	135	30.5	20	27.1	21	74	0.7
1"	25	89	72	145	34.5	25	34	34	104	0.99
1-1/4"	32	112	78	145	43.5	32	42.8	57	135	1.663
1-1/2"	38	121	91	175	48	38	48.9	80	180	2.46
2"	50	146	105	175	61.5	53	61.4	148	250	3.3
2-1/2"	65	165	127	210	76	65	76.9	265	480	6.15
3"	80	183	137	210	92	80	89.5	415	750	11.3
4"	100	232	172	310	115	100	115.5	780	1100	21.2



3PC Butt-Welding Ball Valve

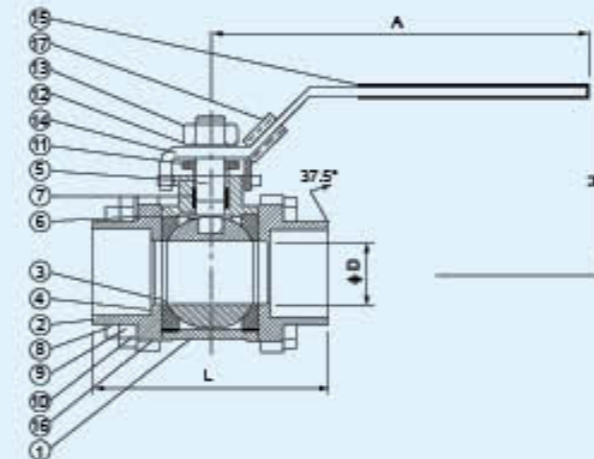
Model: BW-3F

Size: 1/4" ~ 4" FULL BORE (1000PSI)

Materials: CF8M(SS316), DIN1.4408

Features:

- *Investment casting body and cap
- *Working pressure 1000PSI, for W.O.G
- *Adjustable stem packing
- *Pure teflon seals and seats
- *Temperature range: -60 to 450° F
- *Blow-out proof stem
- *100% leakage testing at seat at 100PSI air pressure under water
- *Hydrostatic test pressure: 1500PSI
- *Locking device(optional)

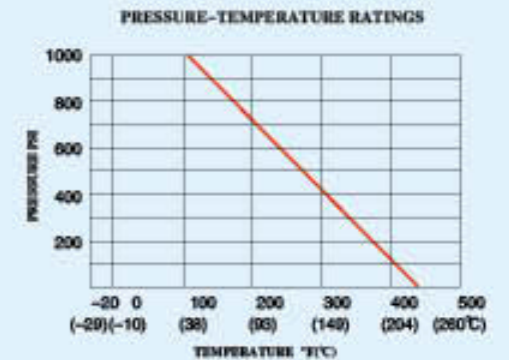


Material List

NO.	PARTS NAME	MATERIAL	QTY
1	BODY	316	1
2	CAP	316	2
3	BALL	316	1
4	SEAT	PTFE	2
5	STEM	316	1
6	THRUST WASHER	PTFE	1
7	STEM PACKING	PTFE	2
8	BOLTS	304	4
9	HEX NUT	304	8
10	BOLT WASHER	304	8
11	GLAND NUT	304	1
12	STEM WASHER	304	1
13	STEM NUT	304	1
14	HANDLE	304	1
15	PLASTIC SLEEVE	PVC	1
16	BODY SEAL	PTFE	2
17	LOCKING DEVICE	304	1

Dimension List

SIZE	ITEM	A	H	D	L ± 0.5
1/4"		99.5	45.5	12.7	57.5
3/8"		99.5	45.5	12.7	59.5
1/2"		99.5	48.0	15.0	65.3
3/4"		126.5	61.5	20.0	82.7
1"		126.5	68.0	25.0	85.8
1-1/4"		153.0	79.0	32.0	101.0
1-1/2"		153.0	86.5	38.0	113.0
2"		192.0	94.5	50.0	128.2
2-1/2"		248.0	119.5	65.0	167.2
3"		248.0	130.0	76.5	175.6
4"		320.0	167.0	100.0	219.5



3PC Screwed Welding Ball Valve

Model: BS-3F

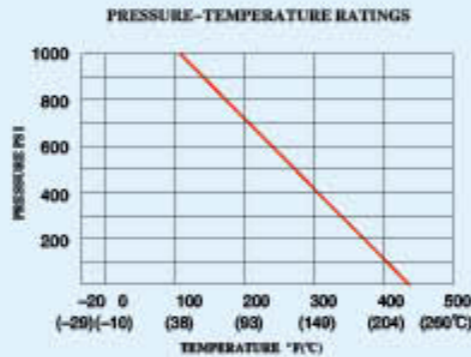
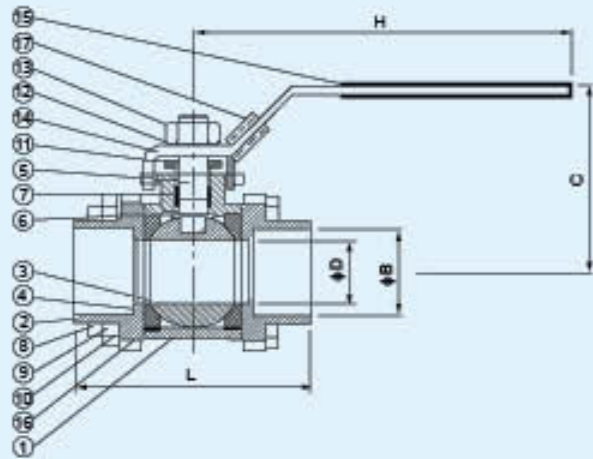
Size: 1/4" ~ 4" FULL BORE (1000PSI)



Threaded: BSPT.BSP.NPT.DIN2999.ISO 228/1
Materials: CF8M(SS316), CF8(SS304)

Features:

- *Investment casting body and cap
- *Working pressure 1000PSI, for W.O.G.
- *Adjustable stem packing
- *Pure teflon seals and seats
- *Temperature range: -60 to 450° F
- *Blow-out proof stem
- *100% leakage testing at seat at 100PSI air pressure under water
- *Hydrostatic test pressure: 1500PSI
- *Locking device(optional)



Material List

NO.	PARTS NAME	MATERIAL	QTY
1	BODY	316	1
2	CAP	316	2
3	BALL	316	1
4	SEAT	PTFE	2
5	STEM	316	1
6	THRUST WASHER	PTFE	1
7	STEM PACKING	PTFE	2
8	BOLTS	304	4
9	HEX NUT	304	8
10	BOLT WASHER	304	8
11	GLAND NUT	304	1
12	STEM WASHER	304	1
13	STEM NUT	304	1
14	HANDLE	304	1
15	PLASTIC SLEEVE	PVC	1
16	BODY SEAL	PTFE	2
17	LOCKING DEVICE	304	1

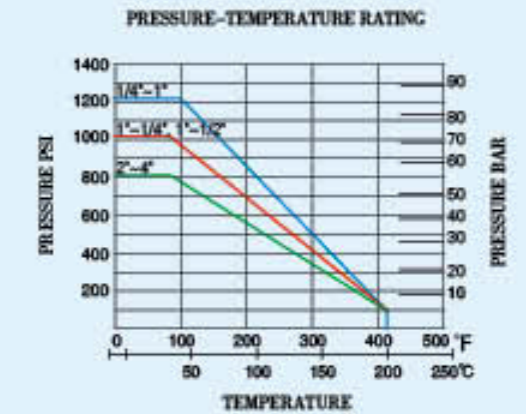
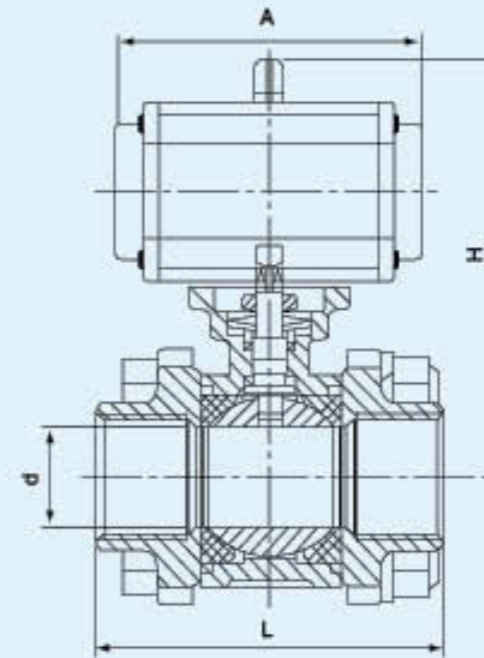
Dimension List

ITEM SIZE	D	L ± 0.5	C	H	B
1/4"	12.7	57.5	45.5	99.5	14.1-14.61
3/8"	12.7	59.0	45.5	99.5	17.53-18.03
1/2"	15.0	62.8	48.0	99.5	21.72-22.23
3/4"	20.0	78.0	61.5	126.5	27.05-27.56
1"	25.0	82.2	68.0	126.5	33.78-34.29
1-1/4"	32.0	97.6	79.0	153.0	42.55-43.05
1-1/2"	38.0	107.6	86.5	153.0	48.64-49.15
2"	50.0	119.7	94.5	192.0	61.11-61.62
2-1/2"	65.0	167.2	119.5	248.0	73.81-74.45
3"	76.0	175.6	130.0	248.0	87.79-90.42
4"	100.0	219.5	167.0	320.0	115.44-116.08

3PC High Mounting Pad Pneumatic Screwed Ball Valve



Investment casting for body and cap of valve
Full bore
Valve Pressure: 1000 PSI(PN63)
Working temperature: -25°C+180°C
Double action pneumatic actuator



Technical data

SIZE	ISO5211	Actuator	Working Time(sec)		Air Used(litre)	
			CCW	CW	CCW	CW
1/4"	F03	DA32	0.03	0.03	0.04	0.03
3/8"	F03	DA32	0.03	0.03	0.04	0.03
1/2"	F03	DA32	0.03	0.03	0.04	0.03
3/4"	F04/F05	DA52	0.03	0.04	0.10	0.13
1"	F04/F05	DA52	0.03	0.04	0.10	0.13
1-1/4"	F05/F07	DA63	0.06	0.08	0.19	0.23
1-1/2"	F05/F07	DA63	0.06	0.08	0.19	0.23
2"	F05/F07	DA75	0.12	0.12	0.36	0.44
2-1/2"	F07/F10	DA85	0.20	0.19	0.51	0.64
3"	F07/F10	DA100	0.30	0.27	0.79	1.00
4"	F07/F10	DA125	0.83	0.66	1.63	2.21

Dimension

SIZE	d	L	H	A	KGS
1/4"	11	47	102	110	0.76
3/8"	12.5	47	102	110	0.76
1/2"	15	54	103	110	0.90
3/4"	20	73	132	140	1.72
1"	25	79	134	140	1.92
1-1/4"	32	90	155	162	3.19
1-1/2"	40	102	160	162	3.88
2"	50	118	184	207	5.82
2-1/2"	65	149	230	238	11.9
3"	80	180	254	272	17.4
4"	100	223	310	366	29.2

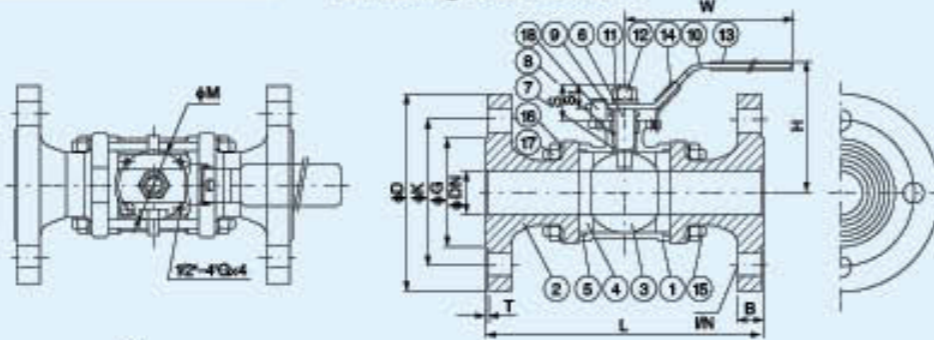
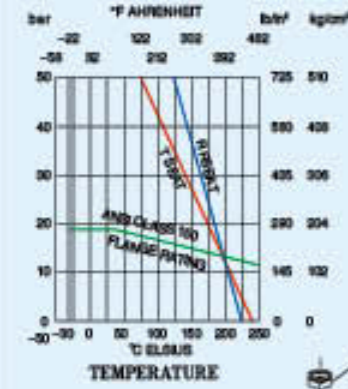
3PC Flanged Ball Valve



Size: 1/2" ~ 4"
 3-PIECE FLANGED END BALL VALVE
 ACC. TO ANSI-CLASS 150, DIN PN16/PN40
 STAINLESS STEEL AISI 316(DIN 1.4408)
 CARBON STEEL S-45C(DIN 1.0619)

FEATURES:
 *Face-to-face DIN 3202-F1, ANSI 16.1
 *Locking device, Lug body.
 *Blow-out proof stem
 *Investment casting body and cap
 *Material: ASTM-A351-CF8M, ASTM-A351-CF8 & ASTM-A216-WCB

***OPTION: Locking device**
Mounting Pad ISO 5211



Material List

ITEM	PARTS	QTY	MATERIAL
1	BODY	1	ASTM-A351-CF8M ASTM-A216-WCB
2	FLANGED END CAP	2	ASTM-A351-CF8M ASTM-A216-WCB
3	BALL	1	ASTM-A351-CF8M ASTM-A351-CF8M
4	BALL SEATS	2	PTFE PTFE
5	JOINT GASKET	2	PTFE PTFE
6	STEM	1	AISI 316 AISI 316
7	THRUST WASHER	1	PTFE PTFE
8	STEM PACKING	2	PTFE PTFE
9	GLAND NUT	1	AISI 304 AISI 304
10	HANDLE	1	AISI 304 AISI 304
11	STEM WASHER	1	AISI 304 AISI 304
12	STEM NUT	1	AISI 304 AISI 304
13	PLASTIC COVER	1	P.V.C P.V.C
14	LOCK DEVICE	1	AISI 304 AISI 304
15	BOLT	4(3",4" x 6 pcs)	AISI 304 AISI 304
16	SPRING WASHER	8(3",4" x 12 pcs)	AISI 304 AISI 304
17	HEX NUT	8(3",4" x 12 pcs)	AISI 304 AISI 304
18	STOP PIN	1	AISI 304 AISI 304

Dimensions Unit: mm

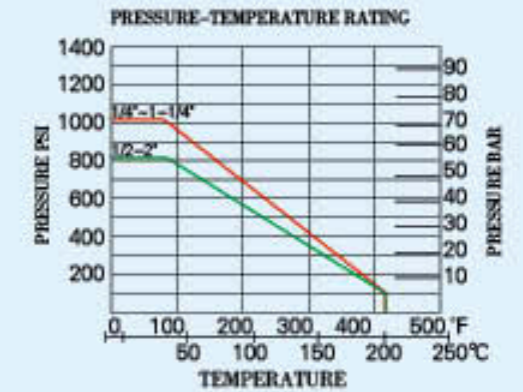
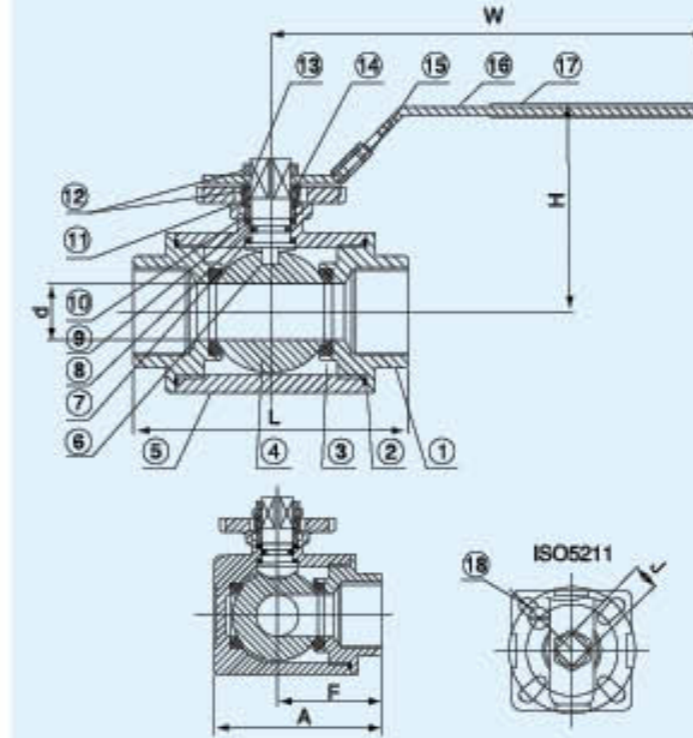
SIZE	L	DIN-PN16				DIN-PN40				ANSI-150				T	H	W	S	SI	ISO 5211		Cv	TORQUE	KGS		
		ΦD	ΦK	ΦC	B	ΦD	ΦK	ΦC	B	ΦD	ΦK	ΦC	B						ΦM	C				Factor	kg-cm
15	130	108	95	65	45	144	95	65	45	164	89	60.5	35	11.2	164	2	77	129	15	30	36	M5	11.2	34	22
20	150	117	105	75	58	164	105	75	58	184	98	70	43	12.7	164	2	76	157	18	34	36	M5	21	78	3.5
25	160	127	115	85	68	164	115	85	68	184	108	79.5	51	14.3	164	2	93	175	22	36	42	M5	35	106	4.0
32	180	140	140	100	78	184	140	100	78	184	117	89	64	15.9	164	2	99	175	23	36	42	M5	57	150	6.0
40	200	165	150	110	88	184	150	110	88	184	127	98.5	73	17.5	164	3	112	188	25	37	50	M6	80	200	7.2
50	230	178	165	125	102	184	165	125	102	184	152	120.5	92	19.1	194	3	120	188	25	37	50	M6	150	280	10
65	290	190	185	145	122	184	185	145	122	188	178	139.5	105	22.3	194	3	161	275	41	30	70	M8	265	510	20
80	310	203	200	160	138	200	200	160	138	200	190	152.5	127	23.9	194	3	171	275	40	30	102	M10	415	780	25
100	350	229	220	180	158	200	225	190	162	228	229	190.5	157	23.9	198	3	193	309	47	37	102	M10	780	1130	39.5

Screwed Three-Way Ball Valve



Mounting Pad ("T" Type)

Investment castings for body and cap
 Reduce bore. "T" Type
 Thread: ANSI B2.1, BS21, DIN259/2999
 Mounting pad: ISO 5211
 pressure rating: PN63 (1000PSI)
 Working temperature: -25°C+180°C
 Material: CF8M, CF8, CF3M, WCB



Material List

ITEM	PARTS	MATERIAL	QTY
1	CAP	CF8M	3
2	GASKET	PTFE	3
3	BALL SEAT	PTFE	4
4	BALL	SS316	1
5	BODY	CF8M	1
6	STEM	SS316	1
7	THRUST WASHER	PTFE	1
8	O-RING	VITON	1
9	STEM PACKING	PTFE	1
10	STEM RING	SS316	1
11	BELLEVILLE WASHER	SS301	1
12	NUT	SS304	2
13	PLATE WASHER	SS304	1
14	NUT STOPPER	SS304	1
15	LOCK DEVICE	SS304	1
16	HANDLE	SS304	1
17	HANDLE SLEEVE	PLASTIC	1
18	STOP PIN	SS304	1

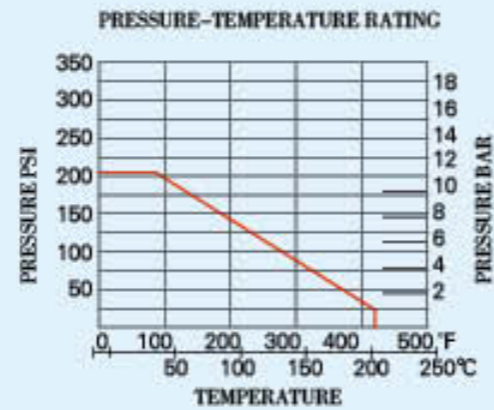
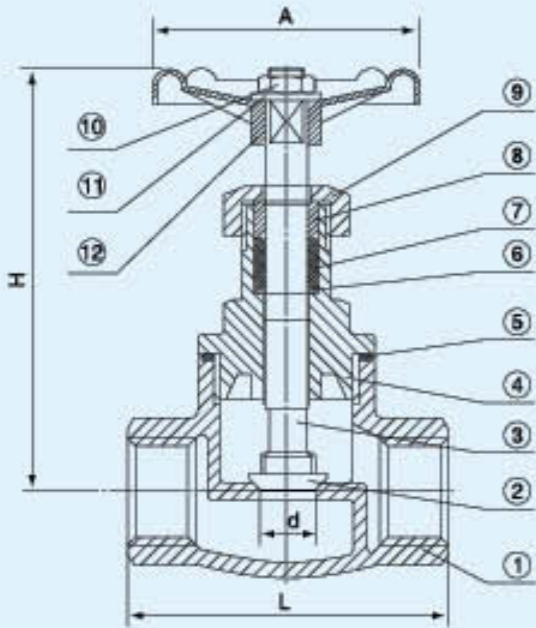
Dimension List

SIZE	d	L	H	W	F	A	J	ISO5211	T(Nm)	KGS
1/4"	9.5	75	66	130	37.5	57.5	9	F03/F04	8	0.70
3/8"	11	75	66	130	37.5	57.5	9	F03/F04	8	0.67
1/2"	12	75	66	130	37.5	57.5	9	F03/F04	8	0.63
3/4"	15	85	72	161	42.5	65.5	11	F04/F05	9	0.94
1"	20	100	77	161	50	79	11	F04/F05	15	1.38
1-1/4"	25	122	92	203	61	97	14	F05/F07	20	2.89
1-1/2"	32	131	96	203	65.5	106.5	14	F05/F07	30	3.60
2"	40	158	107	203	79	129	14	F05/F07	45	6.21

Screwed Globe Valve



Investment casting for body
 Threaded ends: ANSI B2.1, BS 21, DIN 259/2999
 Pressure rating: 200 PSI (PN16)
 Working temperature: -25°C+180°C
 Material: CF8M, CF8, CF3M



Dimension List

SIZE	d	L	H	A	KGS
1/4"	10	70	85	70	0.42
3/8"	12	70	85	70	0.42
1/2"	15	70	85	70	0.41
3/4"	20	80	95	70	0.58
1"	25	90	105	80	0.92
1-1/4"	32	110	125	90	1.34
1-1/2"	40	120	135	90	2.00
2"	50	140	155	100	2.66

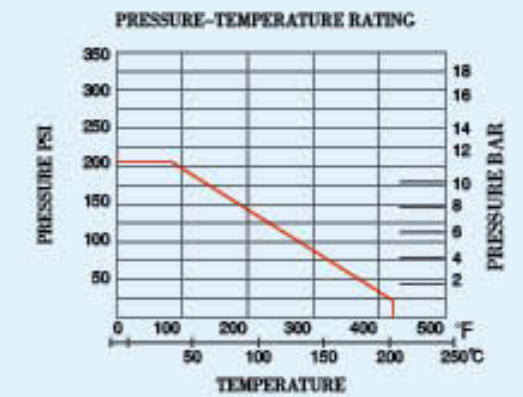
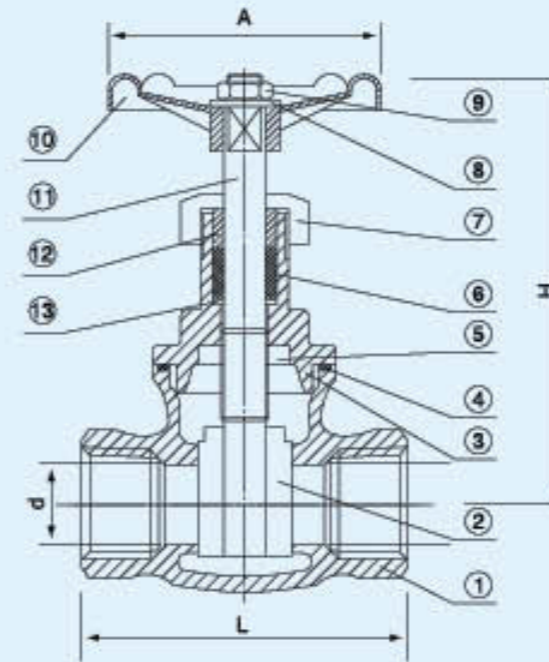
Material List

ITEM	PARTS	MATERIAL	QTY
1	BODY	CF8M	1
2	PETAL	SS316	1
3	STEM	SS316	1
4	CAP	CF8M	1
5	GASKET	PTFE	1
6	WASHER	SS304	1
7	STEM PACKING	PTFE	1
8	RING	SS304	1
9	GLAND RING	SS304	1
10	WHEEL NUT	SS304	1
11	PLATE	SS304	1
12	HAND WHEEL	ALUMNUM ALLOY	1

Screwed Gate Valve



Investment casting for body
 Threaded ends: ANSI B2.1, BS 21, DIN 259/2999
 Pressure rating: 200 PSI (PN16)
 Working temperature: -25°C+180°C
 Material: CF8M, CF8, CF3M



Dimension List

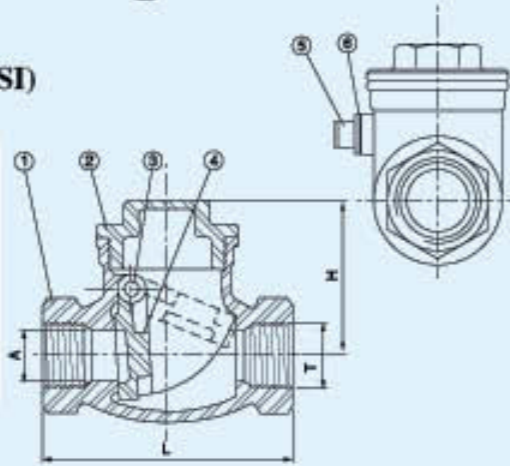
SIZE	d	L	H	A	KGS
1/4"	10	55	85	70	0.44
3/8"	12	55	85	70	0.44
1/2"	15	55	85	70	0.43
3/4"	20	60	95	70	0.56
1"	25	65	105	80	0.71
1-1/4"	32	75	125	90	1.18
1-1/2"	40	80	135	90	1.60
2"	50	95	155	100	2.37

Material List

ITEM	PARTS	MATERIAL	QTY
1	BODY	CF8M	1
2	DISC	CF8M	1
3	BONNET	CF8M	1
4	GASKET	PTFE	1
5	SNAP WASHER	SS316	1
6	PACKING	PTFE	1
7	PACKING NUT	SS316	1
8	WASHER	SS304	1
9	WHEEL NUT	SS304	1
10	HAND WHEEL	ALUMNUM ALLOY	1
11	STEM	SS316	1
12	GLAND	SS304	1
13	SNAP WASHER	SS304	1

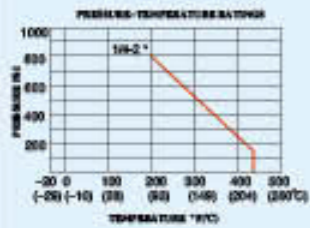
Screwed Swing Check Valve

Model: CT-200
Size: 1/2" ~ 2" (ANSI 200PSI)



- *Materials: CF8M(SS316), CF8(SS304)
- *Investment casting body
- *Inside screw and screwed cap
- *Adjustable stem packing
- *Swing type disc, integral seat

Standard:
*Full port pressure temperature rating 200 PSI WOG/350 S.P.
*Threaded ends conform to BSP.NPT.BSPT.DIN2999



Material List

NO.	PART NAME	SPECIFICATION
1	BODY	ASTM A-351 GR.CF8M
2	COVER	ASTM A-351 GR.CF8M
3	HANDLE PIN	SS316
4	DISC	ASTM A-351 GR.CF8M
5	PLUG	SS316
6	PLUG GASKET	TEFLON

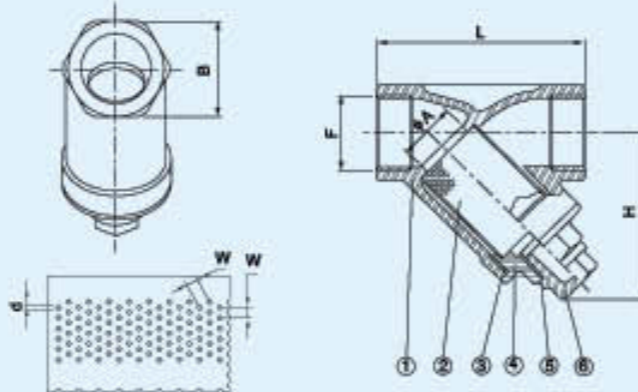
Dimensions Unit: mm

SIZE	ITEM	A	H	L±0.5
1/4"~3/8"		12.5	41.4	56.0
1/2"		15.0	38.0	65.4
3/4"		19.5	48.9	82.0
1"		25.0	58.0	92.5
1-1/4"		30.0	61.6	105.5
1-1/2"		40.0	73.3	122.5
2"		48.0	78.0	143.0

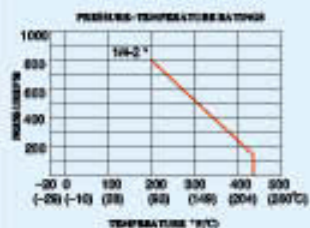
Screwed Y-Strainer



Model: YST-800
Size: 1/2" ~ 2" (ANSI 800PSI)



- Standard:**
*The end-to-end thread conforms to BSP.NPT.BSPT. DIN259, 2999
*Materials: CF8M(SS316), CF8(SS304)
*Investment casting body 800PSI
*Max pressure 800PSI, maximum working temperature 230°C



Material List

NO.	PART NAME	MATERIAL
1	BODY	ASTM A-351 GR.CF8M
2	SCREEN	SUS 316
3	GASKET	TEFLON
4	BONNET	ASTM A-351 GR.CF8M
5	O-RING	VITON
6	BLOW OFF	ASTM A-351 GR.CF8M

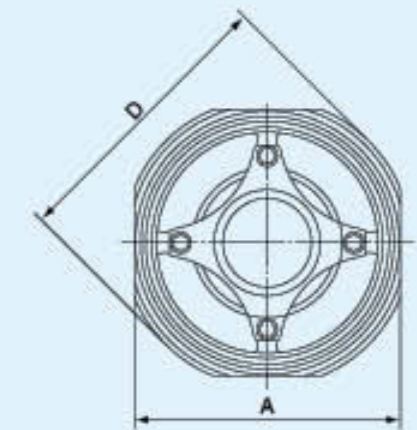
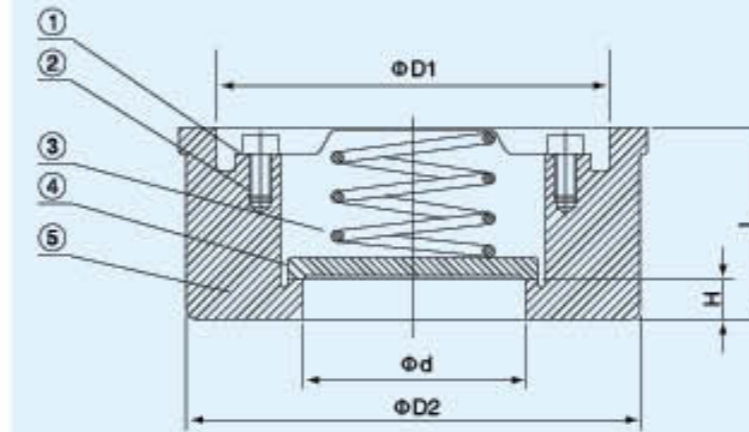
Dimensions Unit: mm

SIZE	ITEM	L±0.5	H
1/4"		65.3	47.5
3/8"		65.3	47.0
1/2"		65.0	47.9
3/4"		79.3	52.9
1"		89.0	69.6
1-1/4"		105.4	76.3
1-1/2"		119.8	82.5
2"		140.0	93.4

Single DISC Wafer Check Valve



Investment Casting For Body And Disc
Flanged ends: DIN2543, 2544, 2545
Face face: DIN3202-K4
Pressure rating: PN40
Material: CF8M, CF8, CF3M



Material List

ITEM	PART	MATERIAL	QTY
1	SPRING COVER	SS316	1
2	SCREW PIN	SS316	4
3	SPRING	SS316	1
4	DISC	CF8M	1
5	BODY	CF8M	1

Dimension List

SIZE	d	D	D1	D2	A	L	H	KGS
1/2"	15	53	38	43	45	16.5	4.4	0.11
3/4"	20	63	46.5	53	55	19.5	4.8	0.19
1"	25	73	55.5	63	65	22	5.4	0.30
1-1/4"	30	84	65	75	78	28	6.0	0.40
1-1/2"	38	94	75	86	88	31.5	6.6	0.60
2"	47	107	84	96	98	40	7.1	0.88
2-1/2"	62.5	126	103	115	118	46	7.8	1.26
3"	77	144	117	130	134	50	8.4	1.86
4"	96	164	137	151	154	60	9.0	3.30

Single DISC Wafer Check Valve



Investment casting for body and disc
 Flanged ends: DIN2543, 2544, 2545
 Face to face: DIN3202-K4
 Pressure rating: PN40
 Material: CF8M, CF8, CF3M

Investment casting for body and disc
 Flanged ends: DIN PN 16/25/40, ANSI 150/300Lbs
 Face to face: DIN3202-K4
 Pressure rating: PN40
 Material: CF8M, CF8, CF3M

Dimension List

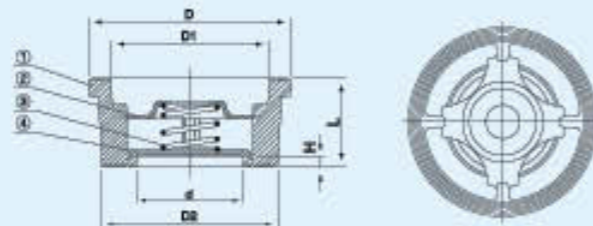
SIZE	d	D	D1	D2	L	H	KGS
1/2"	15	39	28.5	32	16	3	0.09
3/4"	20	46	36.2	40	19	3	0.12
1"	25	54	43.3	46	21	3	0.16
1-1/4"	32	70	56	60	27	3.5	0.31
1-1/2"	40	83	68.5	72	31	3.5	0.43
2"	49	96	80.5	84	40	4	0.78
2-1/2"	62	115	99	103	46	5	1.03
3"	75	135	117	123	50	5	1.54
4"	85	153	135	140	60	6	2.25

Dimension List

SIZE	d	D	D1	D2	L	H	KGS
1/2"	15	39	28.3	34	16	3.5	0.10
3/4"	20	46	35.7	41	19	4	0.14
1"	25	54	40	49	22	4	0.22
1-1/4"	32	70	52.4	62	28	5	0.39
1-1/2"	40	81	61	71	32	5.5	0.54
2"	48	94	75.4	85	40	6	0.77
2-1/2"	62	113	90	102	46	6.5	1.25
3"	75	132	109	123	50	7.5	1.90
4"	95	150	125.3	140	60	8.5	2.80

Material List

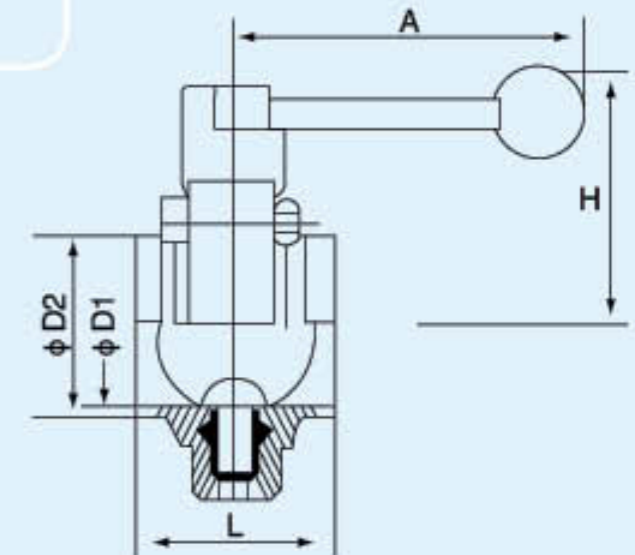
ITEM	PART	MATERIAL	QTY
1	BODY	CF8M	1
2	SPRING COVER	SS316	1
3	SPRING	SS316	1
4	DISC	CF8M	1



Sanitary Grade Welded Butterfly Valve



Material: SS304, SS316
 Category: Triangle Valve
 Size: 1/2"
 Inside Diameter: 15.5mm
 Net Weight: 110g
 Connection: Thread
 Technological Condition: Silica Sol Precision Casting
 Configuration: Decorative Cover

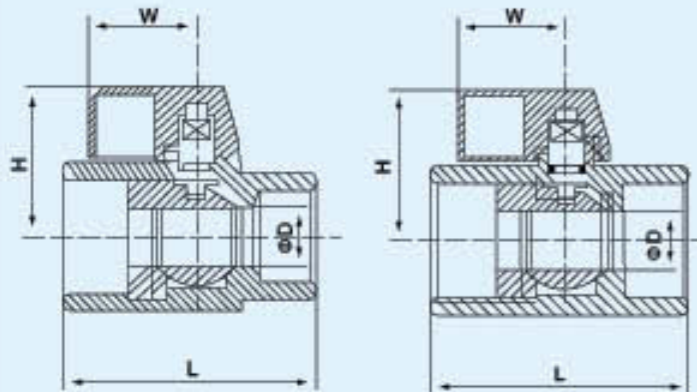


SIZE	DN (mm)	D1	D2	A	H	L
1"	25	25	28	135	68	50
1-1/4"	32	31	34	135	70	50
1-1/2"	40	37	40	135	74	50
2"	50	49	52	135	82	52
2-1/2"	65	66	70	135	93	58
3"	80	81	85	160	102	62
4"	100	100	104	160	112	66
5"	125	125	129	230	128	80
6"	150	150	154	230	142	90
8"	200	200	207	230	183	92

Mini Ball Valve



Technical Data
 Nominal pressure: 6.9Mpa(1000Psi)
 Applicable temperature: -20~180℃
 Body and Bonnet: CF8(304)or CF8M(316)
 Bal: CF8(304)or CF8M(316)
 Stem: 304 or 316
 Sealing and Packing: PTFE
 Thread end: BSP, BSPT, DIN2999, NPT



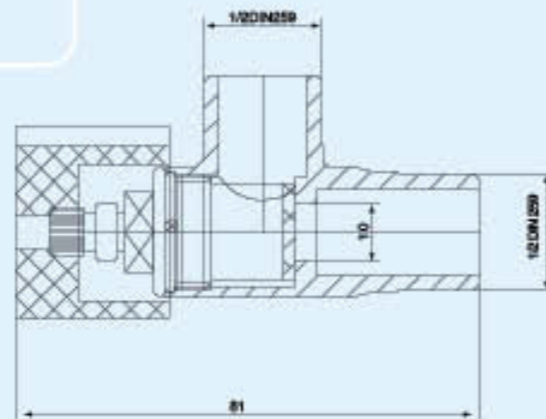
Main Dimension

SIZE ITEM	1/4"	3/8"	1/2"	3/4"	1"
D	7	7	9.2	12.5	15
L	42	42	46	54	65
H	26.5	26.5	28.3	31.5	34
W	22.8	22.8	22.8	22.8	22.8

Angle Valve



Connection: Welded
 Operated Way: Handle
 Standard: ISO, DIN, SMS
 Material: SS304, SS316
 Working Pressure: 0.6MPa, 1.0MPa, 1.6MPa
 Temperature Range: -10℃~150℃
 Applicable Medium: liquid, gas, oil, all kinds of high corrosive chemical medium
 Apply to food, beverage, pharmaceutical, dairy products, beer, and fine chemical industry



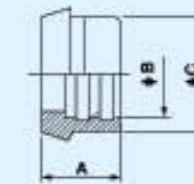
Sanitary Grade Food Union

Model: LF-DINU
 Size: 3/4" ~ 4"
 Materials: CF8M(SS316),CF8(SS304)



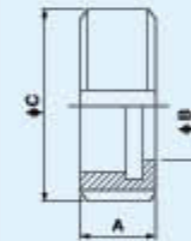
15R MALE(EXPENDED)

SIZE O.D.	A	B	C
20	18.0	22.2	30.0
25	22.0	28.2	35.0
32	25.0	34.2	41.0
40	26.0	40.2	48.0
50	28.0	52.2	61.0
65	32.0	70.3	79.0
80	37.0	85.3	93.0
100	44.0	104.3	114.0



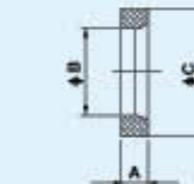
14R LINER(EXPENDED)

SIZE O.D.	A	B	C
20	18.0	22.2	30.0
25	22.0	28.2	35.0
32	25.0	34.2	41.0
40	26.0	40.2	48.0
50	28.0	52.2	61.0
65	32.0	70.3	79.0
80	37.0	85.3	93.0
100	44.0	104.3	114.0



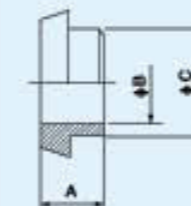
13 ROUND NUT

SIZE O.D.	A	B	C
20	20.0	31.0	54.0
25	21.0	36.0	63.0
32	21.0	42.0	70.0
40	21.0	49.0	78.0
50	22.0	62.0	92.0
65	25.0	80.0	112.0
80	29.0	94.0	117.0
100	31.0	115.0	148.0



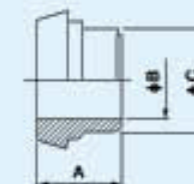
UNION GASKET

SIZE O.D.	A	B	C
20	4.5	23.0	33.0
25	5.0	30.0	40.0
32	5.0	36.0	46.0
40	5.0	42.0	52.0
50	5.0	54.0	64.0
65	5.0	71.0	81.0
80	5.0	85.0	95.0
100	6.0	104.0	114.0



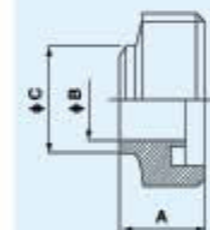
14S LINER(SHORT)

SIZE O.D.	A	B	C
20	13.0	10.0	13.0
25	13.0	16.0	19.0
32	13.0	20.0	23.0
40	15.0	26.0	29.0
50	15.0	32.0	35.0
65	15.0	38.0	41.0
80	16.0	50.0	53.0
100	18.0	81.0	86.0



14 LINER(LONG)

SIZE O.D.	A	B	C
20	18.0	22.0	25.0
25	22.0	28.0	31.0
32	25.0	34.0	37.0
40	26.0	40.0	43.0
50	28.0	52.0	55.0
65	32.0	68.0	72.0
80	37.0	83.0	87.0
100	44.0	102.0	106.0



15S MALE(SHORT)

SIZE O.D.	A	B	C
20	19.0	20.0	23.0
25	22.0	26.0	29.0
32	22.0	32.0	35.0
40	22.0	38.0	41.0
50	23.0	50.0	53.0
65	25.0	66.0	71.0
80	26.0	81.0	86.0
100	30.0	100.0	105.0



15 MALE(LONG)

SIZE O.D.	A	B	C
20	24.0	22.0	25.0
25	29.0	28.0	31.0
32	32.0	34.0	37.0
40	33.0	40.0	43.0
50	35.0	52.0	55.0
65	40.0	68.0	72.0
80	45.0	83.0	87.0
100	54.0	102.0	106.0



HG20594-97



HG20600-97



HG20600-97



HG5028-58



美标 ANSI B16.5



德标 DIN 2633



HG20601-97



HG20595-97 凸面
Convex flange



日式非标法兰
Non-standard flange



高压对焊法兰
High-handed but welding flange



JB82-59



楔面大口径法兰
Wedge surface diameter
diameter flange



等径四通
Straight Cross



等径三通
Straight Tee



同心异径管
Concentric Reducer



90度弯头
Elbow 90°

